



**D340 MIXER
TECHNICAL MANUAL
(ML-134254)
(208/60/3)**

SPECIFICATION SHEET

INSTALLATION INSTRUCTIONS

OPERATION INSTRUCTIONS

CLEANING INSTRUCTIONS

MAINTENANCE INSTRUCTIONS

TROUBLE SHOOTING INSTRUCTIONS

WIRING DIAGRAMS

CATALOG OF REPLACEMENT PARTS

SMARTPARTS™ USER GUIDE

RECOMMENDED SPARE PARTS LIST

Need other Hobart Services?



- [Warranty Registration](#)
- [Delivery and Installation](#)
- [Preventive Maintenance](#)
- [Hobart Service Contracts](#)
- [Extended Warranty Contracts](#)
- [Parts and Accessories](#)
- [Specialty Programs](#)
- [Water Treatment Programs](#)
- [Air Filtration System](#)



HOBART701 S Ridge Avenue, Troy, OH 45374
1-888-4HOBART • www.hobartcorp.com**D340
MIXER****HOBART****STANDARD FEATURES**

- 1½ H.P. Hobart Designed Fixed Speed Motor
- Gear-Driven Transmission
- 15 Minute Timer
- Three Fixed Speeds
- Open Base
- Large, Easy-To-Reach Controls
- #12 Taper Attachment Hub
- Stainless Steel Bowl Guard
- Manual Bowl Lift
- 40-Quart Stainless Steel Bowl, "B" Flat Beater, "D" Wire Whip, "ED" Dough Hook

ACCESSORIES

- Stainless Steel Bowl
- "B" Flat Beater
- "C" Wing Whip
- "D" Wire Whip
- "ED" Dough Hook
- "P" Pastry Knife
- "I" Heavy Duty Wire Whip
- Bowl Truck
- Bowl Scraper
- 20 Quart Accessories
- Ingredient Chute
- 9" Vegetable Slicer
- Meat Chopper Attachment

MODELS

- D340 – 40-Quart All Purpose Mixer
- D340C – 40-Quart All Purpose Mixer with Maximum Security Correctional Package (208/60/1 and 208/60/3 only)

Specifications, Details and Dimensions on Inside and Back.

**D340 MIXER**

D340 MIXER



701 S Ridge Avenue, Troy, OH 45374
1-888-4HOBART • www.hobartcorp.com

SOLUTIONS/BENEFITS

1½ H.P. Hobart Designed Motor

Durability

- Heavy-duty to meet the most demanding operations

15-Minute Electric Timer

Convenience, Ease of Use, Consistency

- Supports recipe mixing times
- Simplifies operation
- Provides accurate results and eliminates overmixing

Three Fixed Speeds

Flexibility, Reliability, Consistency

- For incorporating, blending, mixing ingredients
- Supports consistent results and thorough mixing

Bowl Guard

Protection

- Safety interlock prevents operation when front portion of guard is out of position

Gear-Driven Transmission

Durability, Reliability

- Ensures consistent performance and minimum downtime with positive drive under heavy loads

Hobart Attachments

Durability, Flexibility

- Hobart manufactured accessories are designed for long-term usage under heavy-duty conditions
- Large array of attachments provides multiple uses for recipe and product processing

D340 MIXER CAPACITY CHART

Recommended Maximum Capacities - dough capacities based on 70°F water and 12% flour moisture

PRODUCT	AGITATORS SUITABLE FOR OPERATION	D340
CAPACITY OF BOWL (QTS. LIQUID)		30
Egg Whites	D	1¼ qts.
Mashed Potatoes	B & C	30 lbs.
Mayonnaise (Qts. of Oil)	B or C or D	13 qts.
Meringue (Qts. of Water)	D	1½ qts.
Waffle or Hot Cake Batter	B	16 qts.
Whipped Cream	D or C	9 qts.
Cake, Angel Food (8-10 oz. cake)	C or I	30
Cake, Box or Slab	B or C	40 lbs.
Cake, Cup	B or C	45 dz.
Cake, Layer	B or C	45 lbs.
Cake, Pound	B	40 lbs.
Cake, Short (Sponge)	C or I	25 lbs.
Cake, Sponge	C or I	40 lbs.
Cookies, Sugar	B	30 lbs.
Dough, Bread or Roll (Lt.-Med.) 60% AR §	ED	45 lbs.□
Dough, Heavy Bread 55% AR §	ED	35 lbs.□
Dough Pie	B & P	35 lbs.
Dough, Thin Pizza 40% AR (max. mix time 5 min.) §†	ED	25 lbs.□
Dough, Med. Pizza 50% AR §†	ED	32 lbs.□
Dough, Thick Pizza 60% AR §†	ED	45 lbs.□
Dough, Raised Donut 65% AR	ED	25 lbs.*
Dough, Whole Wheat 70% AR	ED	45 lbs.□
Eggs & Sugar for Sponge Cake	B & C or I	18 lbs.
Icing, Fondant	B	25 lbs.
Icing, Marshmallow	C or I	4½ lbs.
Shortening & Sugar, Creamed	B	35 lbs.
Pasta, Basic Egg Noodle (max. mix time 5 min.)	ED	15 lbs.

NOTE: %AR (% Absorption Ratio) - Water weight divided by flour weight. Capacity depends on moisture content of dough. Above capacities based on 12% flour moisture at 70°F water temperature.

□ 1st Speed

* 2nd Speed

§ If high gluten flour is used, reduce above dough batch size by 10%.

† 2nd speed should never be used on 50% AR or lower products.

USE OF ICE REQUIRES A REDUCTION IN BATCH SIZE.

1 gallon of water weighs 8.33 lbs.

NOTE: Attachment hub should not be used while mixing.



701 S Ridge Avenue, Troy, OH 45374
1-888-4HOBART • www.hobartcorp.com

D340 MIXER

SPECIFICATIONS

MOTOR:

1½ H.P., Hobart designed, permanently lubricated ball bearings, totally enclosed, fan-cooled. Single-phase is capacitor-start, capacitor-run type. Three-phase is squirrel cage, induction-run type.

ELECTRICAL:

120/60/1, 208/60/1, 240/60/1, 208/60/3, 240/60/3, and 480/60/3 – U L Listed. Also available in 380/50/3 and 415/50/3 – not submitted for U L Listing.

CONTROLS:

Magnetic contactor with bimetallic thermal overload protection internally mounted. “Start-Stop” push-buttons protected by rubber caps. A 15-minute electric timer is standard.

TRANSMISSION:

Gear-driven. Gears are constant mesh heat-treated alloy steel. Anti-friction ball or roller bearings. A hardened steel worm and alloy bronze worm gear transmit power from motor to transmission. Grease lubricated.

SPEEDS:

Three positive speeds - Low, Intermediate, and High.

	Agitator (RPM)	Attachment (RPM)
Low	96	56
Intermediate	179	104
High	319	185

BOWL GUARD:

Heavy-duty stainless steel wire front and solid stainless steel rear portion. Front portion of guard rotates easily to add ingredients and install or remove agitator. It detaches in seconds for cleaning in dishwasher or sink. Rear portion of guard can be quickly cleaned in position. Guard must be in closed position before mixer will operate. The bowl support lock prevents the bowl from being lowered while mixer is running. Bowl support interlock provides further protection.

BOWL LIFT:

Hand crank operated, self-locking in any position.

FINISH:

Metallic Gray Hybrid Powder Coat finish. Top Charcoal Gray, Polyurethane Enamel.

STANDARD EQUIPMENT:

Consists of the mixer unit with one (1) 40-quart stainless steel bowl, one (1) “B” flat beater, one (1) “D” wire whip, one (1) stainless steel “ED” dough hook and stainless steel bowl guard.

ATTACHMENT HUB:

Equipped with front-mounted Hobart standard #12 taper attachment hub, and any #12 size attachments may be used.

NOTE: Use of attachment hub during mixing operation may result in a negative impact on performance and longevity of mixer.

ATTACHMENTS AND ACCESSORIES:

The following are available at extra cost:

- | | |
|--------------------------|-------------------------|
| Stainless Steel Bowl | Bowl Truck |
| “B” Flat Beater | Bowl Scraper |
| “C” Wing Whip | 20 Quart Accessories |
| “D” Wire Whip | Ingredient Chute |
| “ED” Dough Hook | 9” Vegetable Slicer |
| “P” Pastry Knife | Meat Chopper Attachment |
| “I” Heavy Duty Wire Whip | |



Hobart Bowl Scraper

Hobart Ingredient Chute



LISTED BY: Underwriters Laboratories, Inc. and NSF International. Certified by the Baking Industry Sanitation Standard Committee.

D340 MIXER



701 S Ridge Avenue, Troy, OH 45374
1-888-4HOBART • www.hobartcorp.com

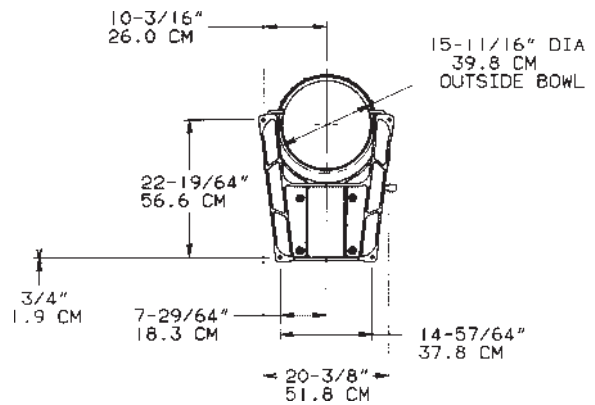
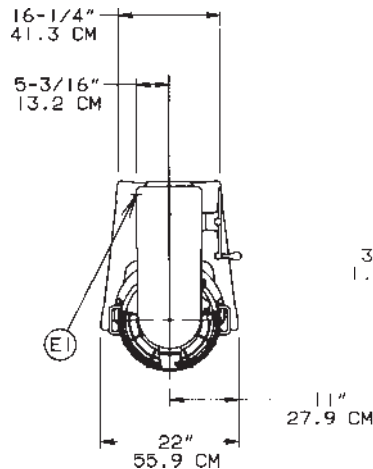
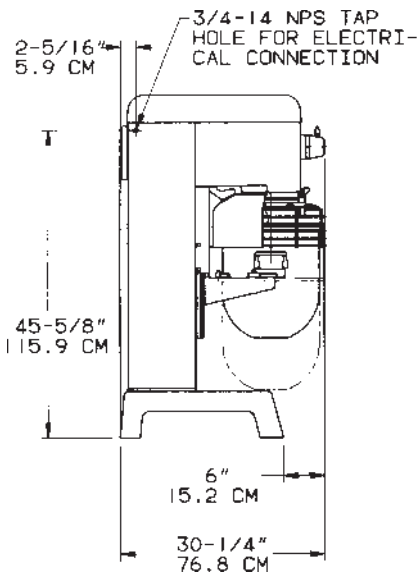
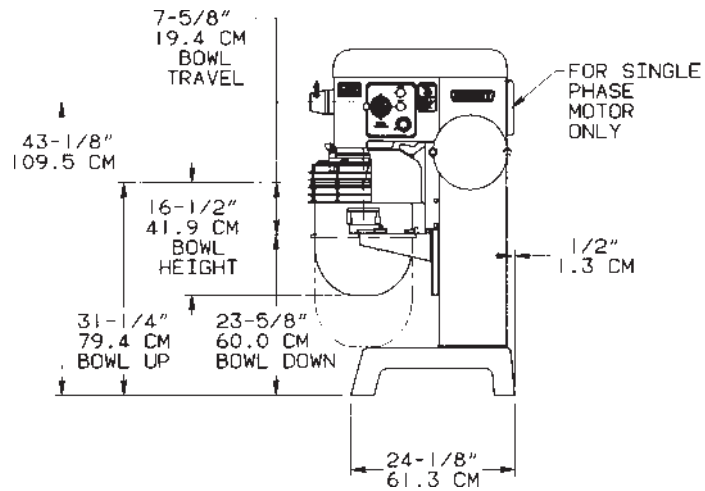
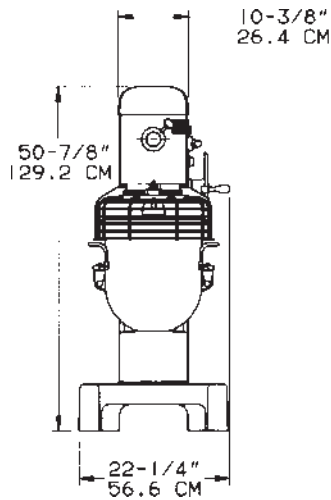
SPECIFICATIONS

ELECTRICAL SPECIFICATIONS: 120/60/1, 208/60/1, 240/60/1, 208/60/3 and 480/60/3 – U L Listed. Also available in 380/50/3 and 415/50/3 – not submitted for U L Listing.

WEIGHT: 575 lbs. net; 600 lbs. domestic shipping.

WARRANTY: Unit has full one-year warranty on parts, labor and mileage against manufacturer's defects. Service contracts are available.

DETAILS AND DIMENSIONS



LEGEND:
EI-ELECTRICAL CONNECTION
NET WEIGHT 564 LBS.
DOMESTIC SHIPPING WT. 600 LBS.

WARNING

ELECTRICAL AND GROUNDING CONNECTIONS MUST COMPLY WITH THE APPLICABLE PORTIONS OF THE NATIONAL ELECTRICAL CODE AND/OR OTHER LOCAL ELECTRICAL CODES.

As continued product improvement is a policy of Hobart, specifications are subject to change without notice.

INSTRUCTIONS



D340 MIXER

D340 MIXERS

D340 *ML - 134254*
D340 W/Electronic Timer *ML - 134256*



701 S. RIDGE AVENUE
TROY, OHIO 45374-0001

937 332-3000

www.hobartcorp.com

F34926 (June 2005)



MODEL D340 MIXER

Installation, Operation and Care of MODEL D340 MIXERS

SAVE THESE INSTRUCTIONS

GENERAL

The D340 Mixer is a medium-duty mixer which develops 1½ horsepower and features a timer, thermal overload protection and a #12 Attachment Hub as standard equipment. A variety of agitators are available for use on either the standard 40-quart bowl or the optional 30-quart bowl. A special 20-quart bowl and agitators are available options.

Programmable Timer Controller is optional on D340 models.

A variety of attachments and accessories are available for all mixers. These are described in a separate *Use and Applications Handbook*, which is furnished with each mixer.

INSTALLATION

UNPACKING

Immediately after unpacking the mixer, check for possible shipping damage. If this machine is found to be damaged, save the packaging material and contact the carrier within 15 days of delivery.

Prior to installation, test the electrical service to assure that it agrees with the specifications on the machine data plate.

LOCATION

Place the mixer in its operating location. There should be adequate space around the mixer for the user to operate the controls and to install and remove bowls. The area above the mixer should allow the top cover to be removed for routine maintenance and servicing.

Holes are provided in the base for permanent bolting to the floor, although this is not necessary in normal installations. Four plastic plugs are supplied with the mixer to plug these holes if they are not used.

ELECTRICAL CONNECTION

WARNING: ELECTRICAL AND GROUNDING CONNECTION MUST COMPLY WITH THE APPLICABLE PORTION OF THE NATIONAL ELECTRICAL CODE AND/OR OTHER LOCAL ELECTRICAL CODES.

WARNING: DISCONNECT THE ELECTRICAL POWER TO THE MACHINE AND FOLLOW LOCKOUT / TAGOUT PROCEDURES.

Models	Volts /Hz/Ph	Rated Amps	Circuit Size (Amps)	Fuse Size (Amps)	60 C Copper Wire Size	Circuit Size (Amps)	Circuit Breaker (Amps)	60 C Copper Wire Size
D340	120/60/1	12.4	20	20	12	20	20	12
D340	208/60/1	8.0	15	10	14	20	20	12
D340	240/60/1	6.2	15	10	14	15	15	14
D340	208/60/3	3.8	15	6	14	15	6	14
D340	240/60/3	3.4	15	6	14	15	6	14
D340	480/60/3	1.7	15	3	14	15	6	14

A hole for 1/2 trade size conduit is located at the top of the pedestal (Fig. 1). Make electrical connections per the wiring diagram located on the inside of the top cover.

Check Rotation (Three-Phase Machines Only)

Three-phase machines must be connected so the planetary rotates in the direction of the arrow on the Drip Cup. To check rotation:

1. Set the Gear Shift Lever on 1.
2. Apply power to the mixer, set the Electromechanical Timer on hold; or, if equipped with a Programmable Timer Controller, set it on [-- : --]. With the Bowl Support all the way up, momentarily run the machine by pushing the START and then STOP buttons.
3. If rotation is incorrect, disconnect electrical power supply and interchange any two of the incoming power supply leads.

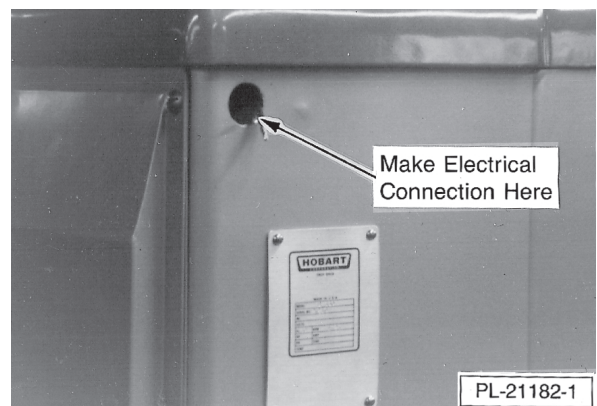


Fig. 1

OPERATION

WARNING: MOVING BEATER IN BOWL. KEEP HANDS, CLOTHING AND UTENSILS OUT WHILE IN OPERATION. DO NOT USE WITHOUT INTERLOCKED GUARD.

Every D340 mixer is equipped with either an Electromechanical Timer Control (described at the bottom of this page) or a Programmable Timer Controller (described on page 6). Also, become familiar with the other operating parts (Fig. 2) and their functions, which are referenced throughout the Operation section.

The Bowl Guard must be in the Front-Center Position or the mixer will not operate (see page 10).

If the Bowl Support is not all the way up, the mixer will not operate unless the START button is held in.

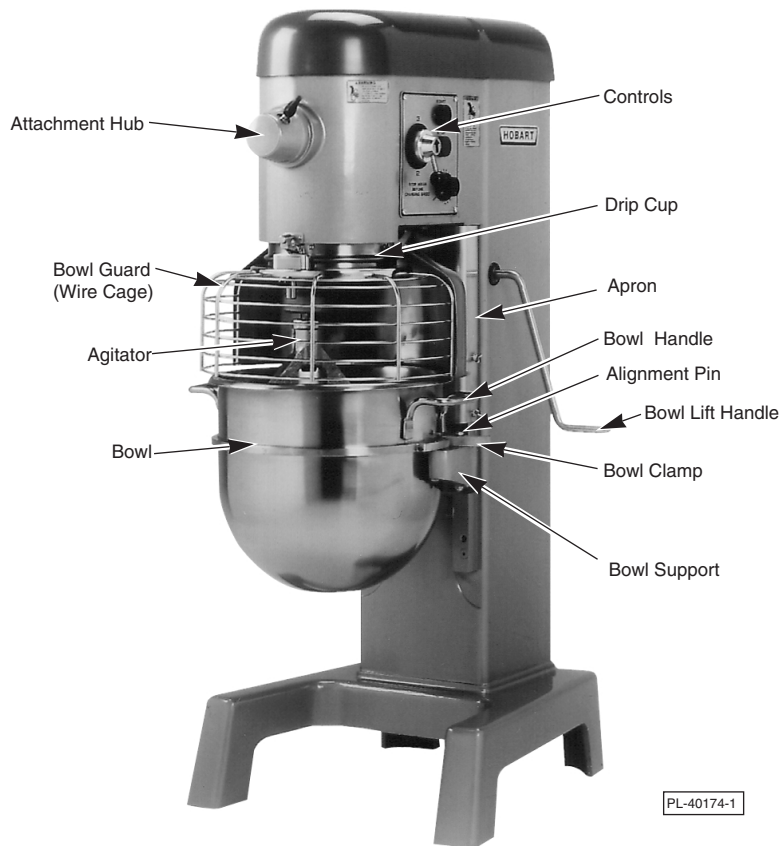


Fig. 2

ELECTROMECHANICAL TIMER CONTROLS (When Equipped, Fig. 3)

The START button is used to start the mixer.

The STOP button is used to stop the mixer.

The TIMER is used in conjunction with the START button for timed mixing operations and will stop the mixer when a preset time has elapsed.

Non-timed Mixing

Set the timer on hold and use the START and STOP buttons to operate the mixer.

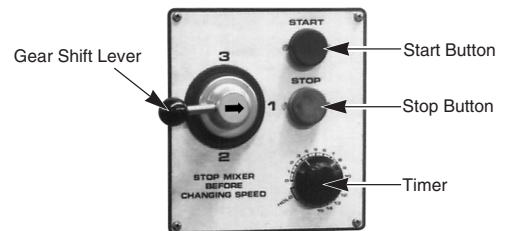
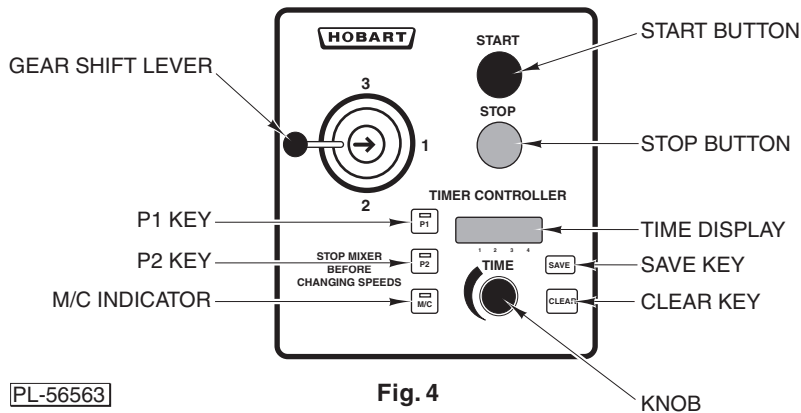


Fig. 3

PROGRAMMABLE TIMER CONTROLLER (When Equipped)

At idle, the TIME DISPLAY [--:--] shows that no time has been set (Fig. 4).



Timer Keys	Programming Function (if the mixer is not mixing)
P1	Contains up to four preset times. Displays each preset time sequentially.
P2	Contains up to four additional preset times. Displays each preset time sequentially.
TIME Knob	Turn the TIME knob until the desired time is shown on the TIME DISPLAY.
SAVE	Replaces the preset time with the indicated time.
CLEAR	Returns to idle from a programming function.

Continuous Mixing

START and STOP buttons control mixing operation.

Beginning from the idle display [--:--], press START to begin mixing. The M/C Indicator will be lit, and the total mixing time will be indicated (minutes and seconds).

Press STOP when mixing is done. The M/C Indicator light goes off and the idle display [--:--] returns.

Set Mixing Time (Using TIME Knob)

Beginning from the idle display [--:--], turn the TIME knob to set the mixing time. The M/C Indicator will be lit.

START and STOP buttons control mixing operation.

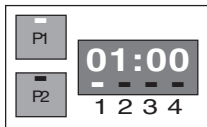
Press START to begin mixing. The timer will count down from the set time to [00 : 00].

If STOP is pressed, both mixing and timer countdown will be interrupted. After pressing STOP, press START to resume both mixing and timer countdown; or, press CLEAR to return to the idle display.

When the timer reaches [00 : 00], the mixer will stop and the M/C Indicator will be lit. A tone will sound for 2 seconds and the idle display [--:--] will return.

Set Mixing Time (Preset Keys P1 or P2)

Each preset key has four time settings. The indicator lights above the number 1, 2, 3 or 4 and the P1 or P2 indicator light identify which preset time is being displayed. The chart below shows the default settings. The next page shows how to revise these preset times. The TIME Knob can be used to adjust the mixing time if it is turned prior to pressing START.



- Indicators above P1 and 1 indicate the first preset time contained in P1.

Beginning from the idle display [-- :--], press P1 or P2 to display the #1 preset mixing time. (Pressing P1 or P2 again will display the next preset time, etc.)




The TIME knob can adjust the time.

START and STOP buttons control mixing operation.

Press START to begin mixing. The timer will count down from the set time to [00 : 00].

If STOP is pressed, both mixing and timer countdown will be interrupted. After pressing STOP, press START to resume both mixing and timer countdown; or press CLEAR to return to the idle display.

When the mixer is stopped, you can perform the following tasks: add ingredients, change speed, reset the timer, continue mixing or unload.

When the timer reaches [00 : 00], the mixer stops. A tone sounds for 2 seconds and the next preset mixing time displays. When the last preset time reaches [00 : 00], the P1 or P2 indicator light is lit and the idle display [-- :--] returns. Repeat from  to complete four preset times.

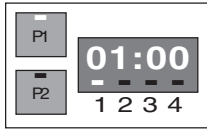
The timer reverts to the factory-programmed preset times after any power interruption.

FACTORY-PROGRAMMED PRESET TIMES

Preset Key	Indicator			
	1	2	3	4
P1	01:00	02:00	10:00	00:00
P2	02:00	01:00	05:00	03:00

Revise Preset Mixing Times (Preset Keys P1 or P2)

Each preset key has four preset time settings. The indicator lights above the number 1, 2, 3 or 4 and the P1 or P2 indicator light identify which preset time is being displayed.



□ Indicators above P1 and 1 indicate the first preset time contained in P1.

Beginning from the idle display [-- :--], press P1 or P2 to display the #1 preset mixing time. (Pressing P1 or P2 again will display the next preset time, etc.)

 Turn the TIME knob to change the time for the indicated preset.

Press SAVE to retain the revised time and move to the next preset time.

Repeat from  for each preset time (1, 2, 3 and 4 contained in P1 or P2).

Press CLEAR to retain the saved times and return to the idle display [-- :--].

The timer reverts to the factory-programmed preset times after any power interruption.

FACTORY PROGRAMMED PRESET TIMES

Preset Key	Indicator			
	1	2	3	4
P1	01:00	02:00	10:00	00:00
P2	02:00	01:00	05:00	03:00

CHANGING SPEEDS

The Gear Shift Lever is used to change speeds. Always stop the mixer before changing speeds.

1. Push the STOP button.
2. Move the Gear Shift Lever to the desired speed.
3. Push the START button to restart the mixer.

NOTE: If you do not stop the mixer to change speeds, it will automatically shut itself off and you will have to restart it after changing speeds.

Mixer Speeds

Speed 1 (Low) — This speed is for heavy mixtures such as bread dough, heavy batters and potatoes.

Speed 2 (Medium) — This speed is for light dough (which must rise quickly), cake batters, mashing potatoes and some whipping operations.

Speed 3 (High) — This is a fast speed for light work, such as whipping cream, beating eggs and mixing thin batters.

BOWL LIFT

D340 models are equipped with a Bowl Lift Handle (see Fig. 2). Mixers equipped with Bowl Lift Handle must be turned off to lower the bowl.

- Raise the bowl by rotating the lift handle *downward*.
- Lower the bowl by rotating the lift handle *upward*.

MIXING

This section explains operation of the mixer and how to install bowls, agitators and attachments. A separate *Use and Applications Handbook*, provided with the mixer, contains information on mixing procedures and outlines specific uses for agitators, attachments and accessories.

Bowl

New mixer bowls and agitators (beaters, whips and dough arms) should be thoroughly washed with hot water and a mild soap solution, rinsed with either a mild soda or vinegar solution, and thoroughly rinsed with clear water before being used. This cleaning procedure should also be followed for bowls and agitators before whipping egg whites or whole eggs.

The bowl must be installed before the agitator is installed.

To install the bowl, fully lower the Bowl Support (Fig. 2). Position the bowl so the alignment bracket on the back of the bowl is in the bowl retainer on the Bowl Support and the alignment pins on the front of the Bowl Support fit in the holes in the bowl. Lock the bowl in place by rotating the Bowl Clamps (Fig. 2) over the ears of the bowl.

Agitator

To install an agitator, the bowl must be installed and fully lowered. Place the agitator in the bowl, push the agitator up on the agitator shaft and turn the agitator *clockwise* to seat the shaft pin in the slot of the agitator shank.

To Raise the Bowl While Mixing

To raise the bowl while the agitator is mixing the product (when required by recipe or when using the bowl scraper attachment):

1. Load ingredients.
2. Close the wire cage assembly.
3. Select low speed.
4. To begin mixing, press and hold the START button; then raise the bowl.

BOWL GUARD

The Wire Cage Assembly can be rotated out of the way to add ingredients or to access the bowl and agitator.

Rotate the Wire Cage Assembly

Push the Latch in to release the Centering Pin from the Centering Ramp. Note how the grooves on the nylon retainers allow the Wire Cage to ride around the circular Ridge on the Planetary Drip Cup. The Wire Cage can rotate 360° left or right. When the Wire Cage returns to the Front-Center Position, the Centering Pin is captured and held by the Centering Ramp, restricting rotation of the Wire Cage until the Latch is pressed again.

The Wire Cage must be in the Front-Center Position for the mixer to operate.

Remove Wire Cage Assembly

Lower the bowl. Rotate the Wire Cage to the rear. Remove both agitator and bowl. Return the Wire Cage to the front.

While holding the Wire Cage securely with both hands, use your thumb to push down on the Black Release Knob. Lower and remove the Wire Cage. Wash it in a sink, rinse with clear water and dry with a clean cloth.

The stainless steel Splash Guard can be wiped off or washed easily with a cloth or sponge and warm, soapy water. Rinse with clear water and dry with a clean cloth.

Reinstall Wire Cage Assembly

Hold the Wire Cage so its top ring is positioned around the Drip Cup with the grooves in both nylon Rear Retainers straddling the Ridge on the Drip Cup. Push in the Front-Center Retainer until it stays in and its grooves straddle the Ridge on the Drip Cup. The Wire Cage is properly assembled when all three Retainers straddle the Ridge on the Drip Cup in the three opposed locations.

Rotate the Wire Cage to the rear to install or remove the agitator and bowl or to add ingredients.

Return the Wire Cage to the Front-Center Position to operate the mixer.

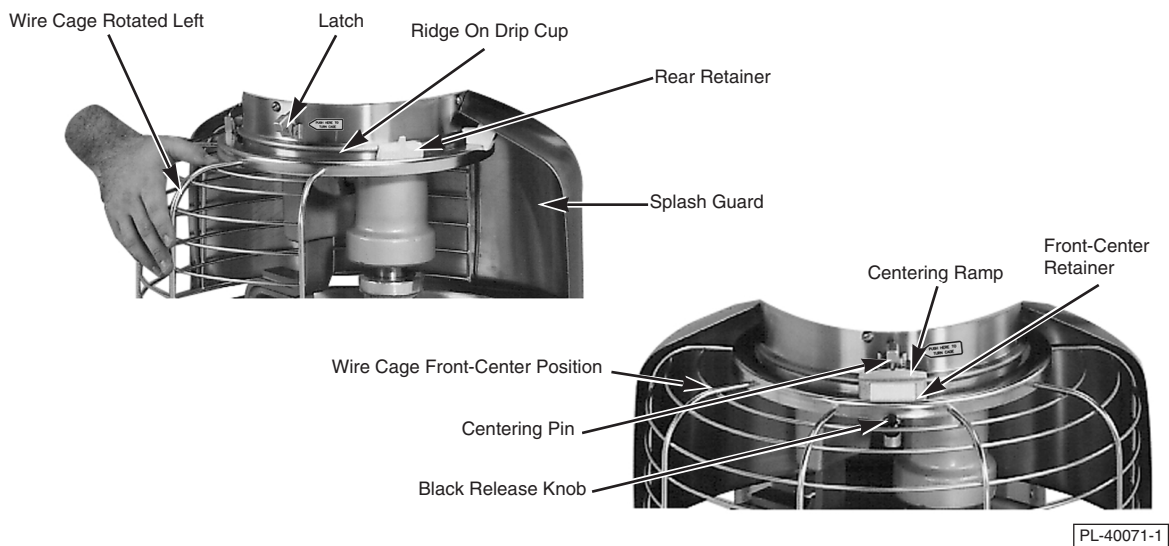


Fig. 5

ATTACHMENTS

To install an attachment, loosen the Attachment Hub thumb screw (Fig. 2) and remove the plug. Insert the attachment into the Attachment Hub, making certain that the square shank of the attachment is in the square driver of the mixer. Secure the attachment by tightening the thumb screw.

Move the Gear Shift Lever to the desired speed. With the Bowl Support all the way up and the Wire Cage in the Front-Center Position (Fig. 5), start the mixer to operate the attachment.

The meat and food chopper attachment should be operated in second or third speed. If material in the cylinder stalls the mixer, push the STOP button at once. Do not attempt to restart the mixer in a lower speed; remove the adjusting ring, knife, plate and worm and clear any obstruction.

Note: This attachment must not be used to chop bread crumbs.

Bowl Scraper Attachment

The Mixer bowl scraper attachment (when ordered) is provided with a separate instruction manual covering its installation, operation, use and care.

CLEANING

WARNING: DISCONNECT THE ELECTRICAL POWER TO THE MACHINE AND FOLLOW LOCKOUT / TAGOUT PROCEDURES.

A flat scraper and a brush are furnished to aid in cleaning bowls and agitators.

The mixer should be thoroughly cleaned daily. Do not use a hose to clean the mixer; wash with a clean, damp cloth. The base allows ample room for cleaning under the mixer. The apron may be removed by loosening the thumb screws. Behind this apron is an access cover which may be removed for cleaning.

The Drip Cup-Splash Guard Assembly (Fig. 5) should be removed periodically and wiped clean.

MAINTENANCE

WARNING: DISCONNECT THE ELECTRICAL POWER TO THE MACHINE AND FOLLOW LOCKOUT / TAGOUT PROCEDURES.

LUBRICATION

Bowl Clamps

The bowl clamp area of the bowl support should be lubricated twice a year. Lightly coat with Lubriplate 630AA (supplied).

BOWL LIFT SLIDE-WAYS

The Slideways (Fig. 8) should be lubricated once each month. Remove the apron (secured by four thumb screws) from the front of the pedestal. Lightly coat both Slideways with Lubriplate 630AA (supplied). Replace the apron and thumbscrews.

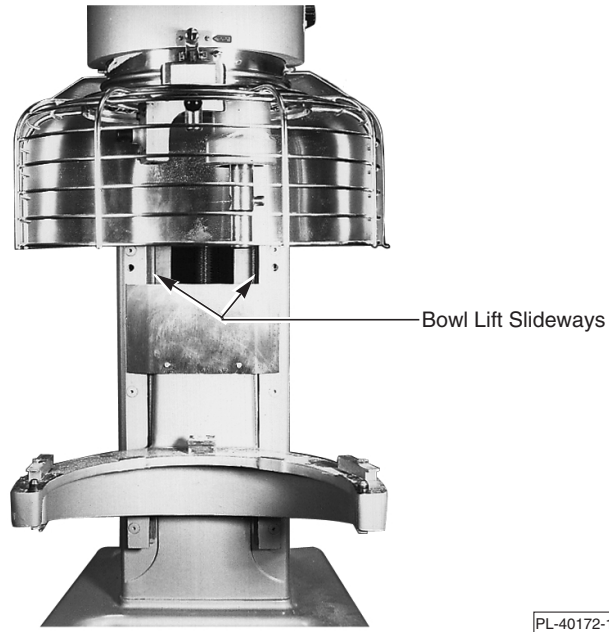


Fig. 8

TROUBLESHOOTING

SYMPTOMS

POSSIBLE CAUSES

Mixer will not start.

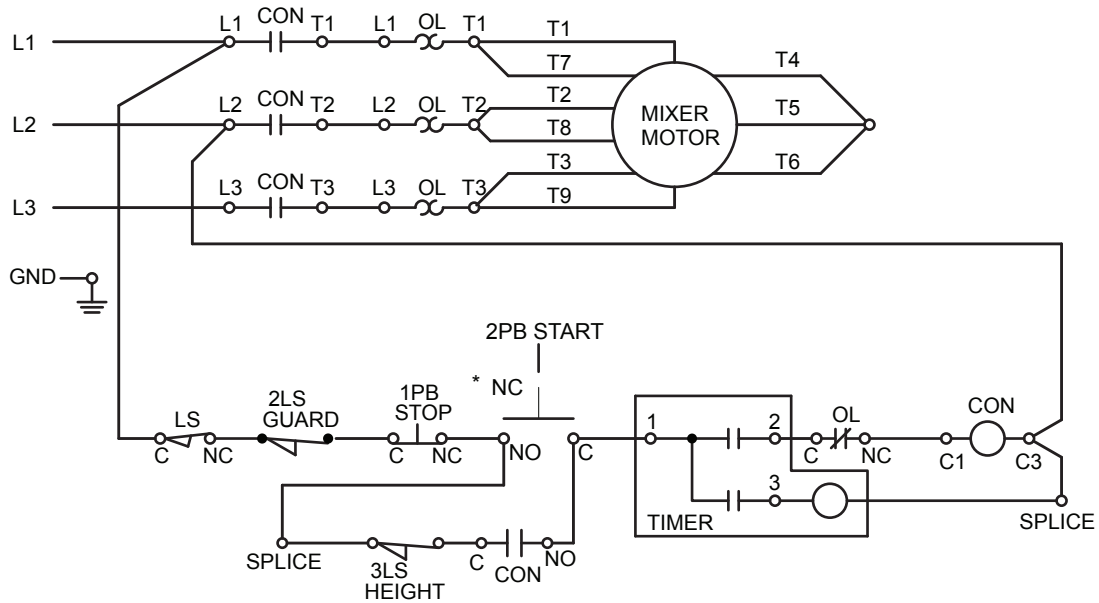
1. Gear Shift Lever between gears (not fully engaged).
 2. Circuit protector in open position — check fuse or disconnect switch.
 3. Bowl not all the way up.
 4. Wire Cage Assembly is not in the Front-Center Position.
 5. Mixer or attachment overloaded.
-

SERVICE

If service is needed on this equipment, contact your local Hobart Service Office.

WARNING

ELECTRICAL AND GROUNDING CONNECTIONS
MUST COMPLY WITH THE APPLICABLE
PORTIONS OF THE NATIONAL ELECTRICAL
CODE AND/OR OTHER LOCAL ELECTRICAL CODES.



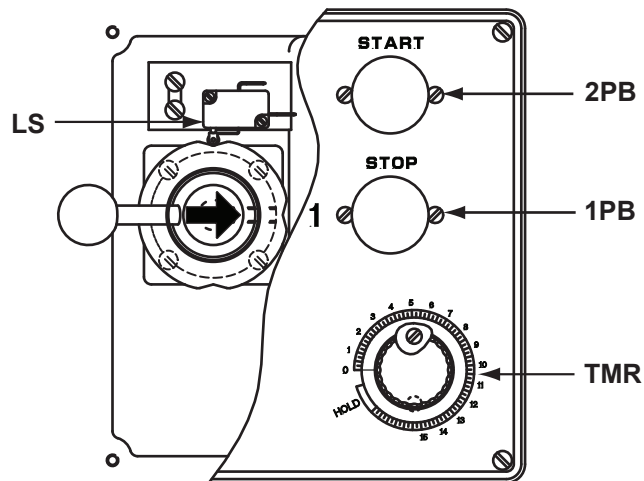
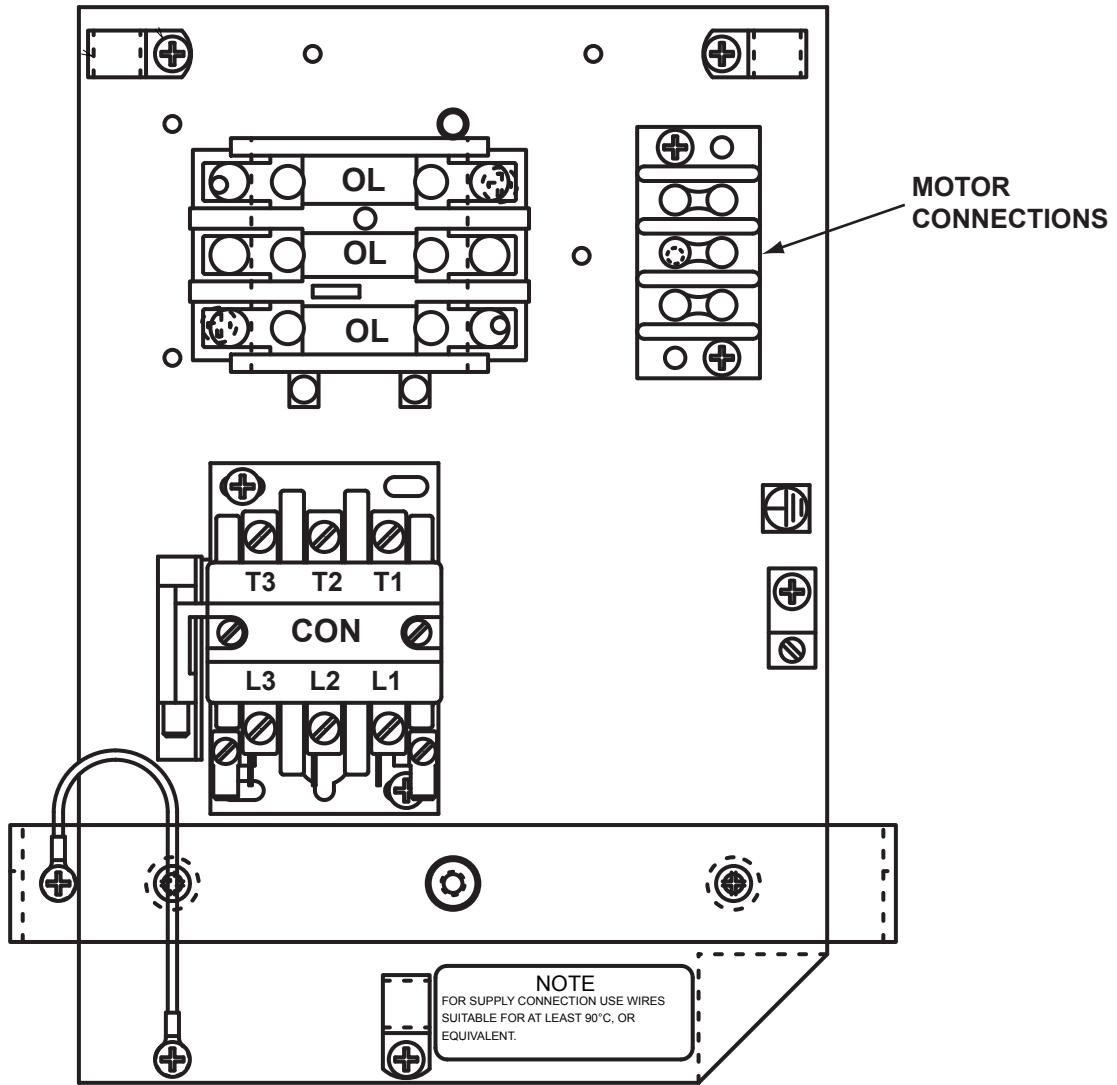
SYMBOL DEFINITIONS

	GND	GROUND		T	TRANSFORMER
	PB	PUSH BUTTON-STOP (N.C.)		LS	LIMIT SWITCH
	PB	PUSH BUTTON-START (N.O.)			CONTACT-NORMALLY OPEN (N.O.)
	FU	FUSE			CONTACT-NORMALLY CLOSED (N.C.)
	CON	CONTACTOR COIL			MOTOR
	TMR	TIMER			INSEPARABLE CONNECTION
	OL	OVERLOAD HEATER ELEMENT			SEPARABLE CONNECTION
				RC	SNUBBER ASSY

ELECTRICAL DIAGRAM D-340 MIXER 208V - 60HZ - 3PH

DERRIVED FROM F-18763E

AI 2594



COMPONENT LAYOUT

AI 2595



CATALOG OF REPLACEMENT PARTS

MODEL D340 MIXER

(INCLUDES MOTOR PARTS)

D340	ML-134254
D340C	ML-134257

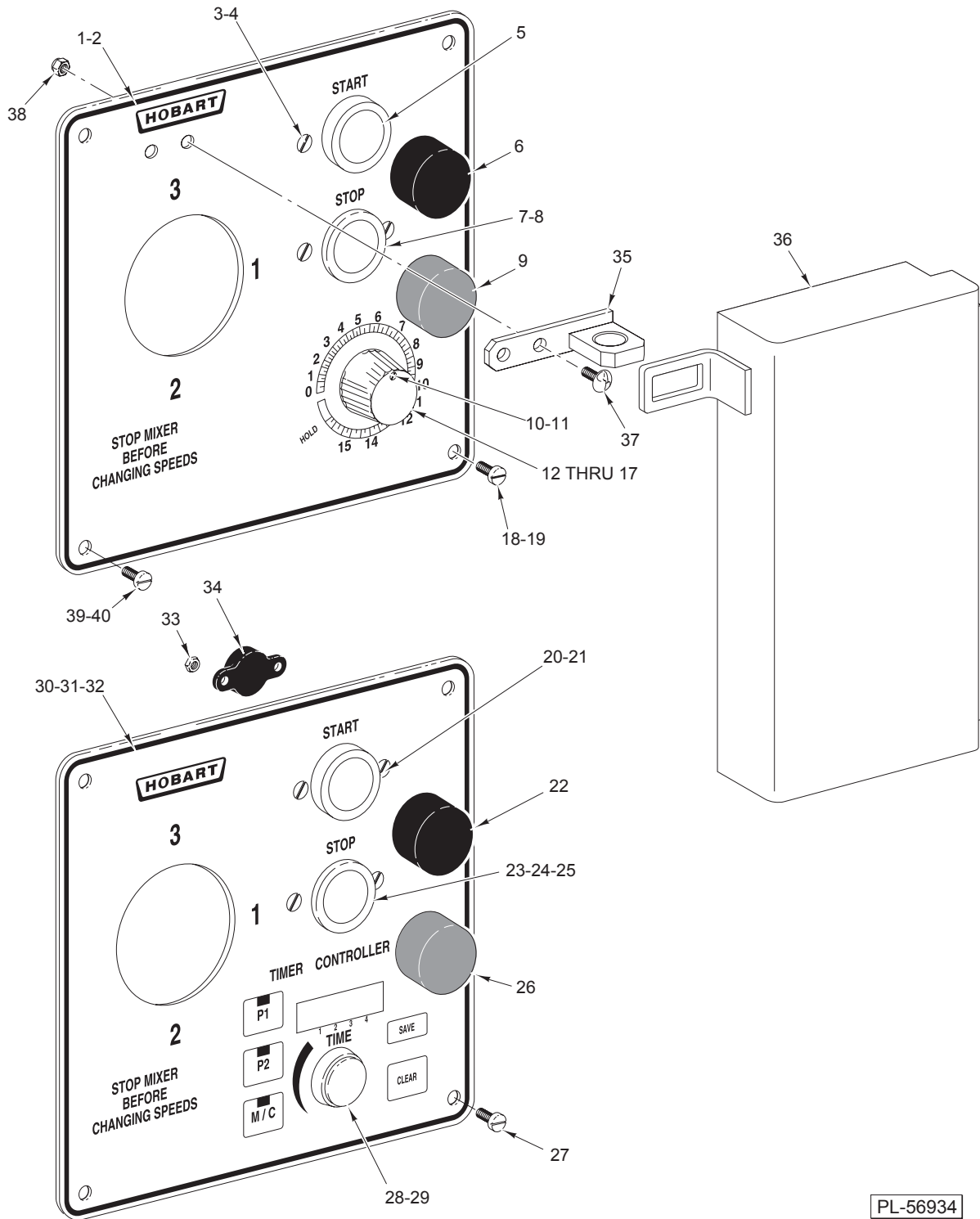
PRIOR MLS COVERED IN THIS CATALOG

D340	ML-134185
D340C	ML-134188
D340 W/O Brake	ML-104483
D340 W/Brake	ML-104484
D340C	ML-134118



Table of Contents

5	TIMER CONTROL AND SWITCH UNIT
7	ELECTRICAL COMPONENT PANEL – 1 PHASE
9	ELECTRICAL COMPONENT PANEL – 3 PHASE
11	BASE AND COLUMN (ML-104483, ML-104484, & ML-134118)
13	BASE AND COLUMN (ML-134185, ML-134188, ML-134254, & ML-134257)
15	BOWL SUPPORT (ML-104483, ML-104484, & ML-134118)
17	BOWL SUPPORT AND LIFT UNIT (ML-134185, ML-134188, ML-134254, & ML-134257)
19	TRANSMISSION CASE
21	SHIFTER UNIT
22	MOTOR PARTS – 1 PHASE (*NON GE MOTORS)
23	MOTOR PARTS – 1 PHASE (GENERAL ELECTRIC)
24	MOTOR PARTS – 3 PHASE (*NON GE MOTORS)
25	MOTOR PARTS – 3 PHASE (GENERAL ELECTRIC)
27	TRANSMISSION
29	PLANETARY AND ATTACHMENT HUB
31	BOWL GUARD UNIT (PREVIOUS CONSTRUCTION)
33	BOWL GUARD UNIT (CURRENT CONSTRUCTION)
34	BRAKE UNIT
35	BOWL
36	AGITATORS

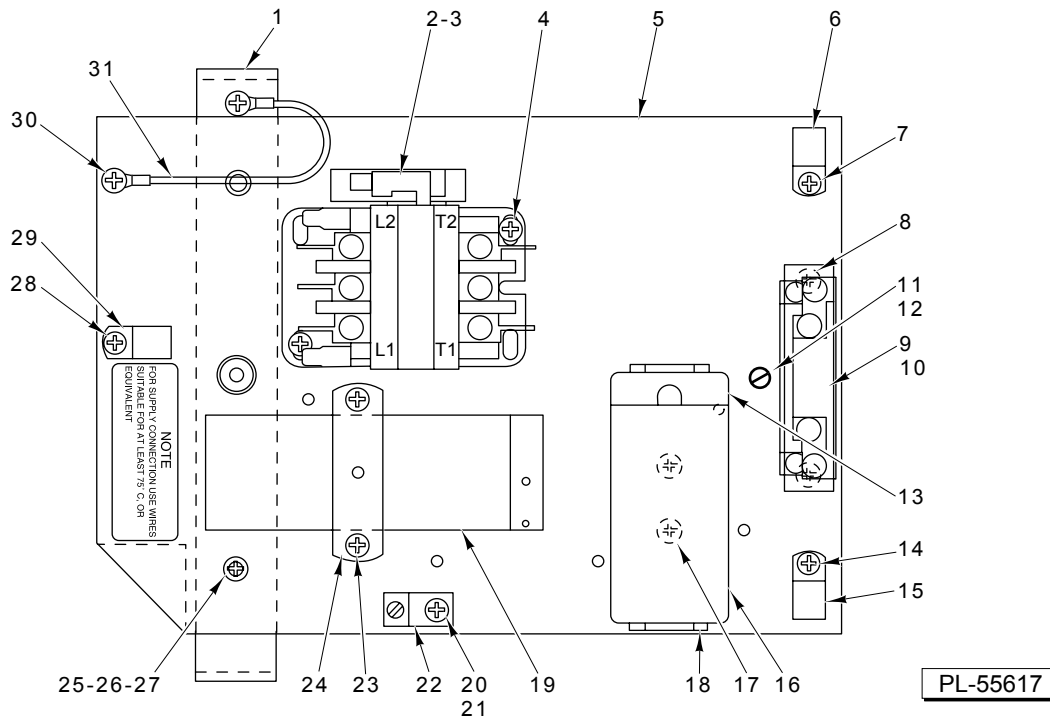


PL-56934

TIMER CONTROL AND SWITCH UNIT

TIMER CONTROL AND SWITCH UNIT

ILLUS.	PART NO.	NAME OF PART	AMT.
PL-56934			
1	00-271312	Plate – Switch & Timer (ML-104483, ML-104484, ML-134185, & ML-134254)	1
2	00-271312	Plate – Switch & Timer (ML-134118, ML-134188, & ML-134257)	1
3	SC-013-12	Mach. Screw 6-32 x 1/4 Slotted Flat Hd. (ML-104483, ML-104484, ML-134185, & ML-134254)	4
4	SC-128-67	Mach. Screw 6-32 x 1/4 Tx. Flat Hd. (SST) (ML-134118, ML-134188, & ML-134257)	4
5	00-087711-183-4	Switch – Push Button (N.O.)	1
6	00-102467-00001	Cap – Push Button (Start) (Black)	1
7	00-087711-183-2	Switch – Push Button (N.C.)	1
8	00-087711-183-3	Switch – Push Button (N.C.) (ML-104484)	1
9	00-102467-00002	Cap – Push Button (Stop) (Red)	1
10	SC-121-89	Mach. Screw 6-32 x 1/4 Hex Flat Hd. (SST) (ML-134118, ML-134188, & ML-134257)	2
11	SC-013-07	Mach. Screw 5-40 x 1/4 Slotted Flat Hd.	2
12	00-291748	Knob – Timer	1
13	00-294650-004-1	Timer Assy. (115 V., 60 Hz.)	1
14	00-294650-004-2	Timer Assy. (200/300 V., 60 Hz.)	1
15	00-294650-004-3	Timer Assy. (415 V., 50 Hz.)	1
16	SC-013-07	Mach. Screw 5-40 x 1/4 Slotted Flat Hd.	2
17	00-271313	Insulator – Timer	1
18	SD-024-01	Self-Tapping Screw 10-24 x 3/8 Slotted Pan Hd., Type TT	2
19	SD-037-59	Self-Tapping Screw 10-24 x 1/2 Hex Button Hd., Type F (ML-134118, ML-134188, & ML-134257)	2
20	00-087711-183-4	Switch – Push Button (N.O.)	1
21	SC-053-38	Mach. Screw 6-32 x 1/4 Slotted Truss Hd.	2
22	00-102467-00001	Cap – Push Button (Start) (Black)	1
23	00-087711-183-2	Switch – Push Button (N.C.)	1
24	00-087711-183-4	Switch – Push Button (N.C.) (ML-104484)	1
25	SC-053-38	Mach. Screw 6-32 x 1/4 Slotted Truss Hd. (SST)	2
26	00-102467-00002	Cap – Push Button (Stop) (Red)	1
27	SD-024-01	Self-Tapping Screw 10-24 x 3/8 Slotted Pan Hd., Type TT	4
28	00-437775	Knob – Potentiometer	1
29	00-437742	Seal – Shaft	1
30	00-438323-00001	Switch Plate & Keypad Assy. (120 VAC)	1
31	00-439400-00001	Board Assy. (120 VAC)	1
32	00-439400-00002	Board Assy. (240 VAC)	1
33	NS-046-17	Stop Nut 4-40 Hex	2
34	00-438499	Buzzer Assy.	1
35	00-477670	Hasp Weldment (ML-134118, ML-134188, & ML-134257)	1
36	00-477667	Cover Assy. & Hinge (ML-134118, ML-134188, & ML-134257)	1
37	SC-128-69	Mach. Screw 10-24 x 3/8 Tx. Button Hd. (SST) (ML-134118, ML-134188, & ML-134257)	2
38	NS-032-01	Lock Nut 10-24 Hex (ML-134118, ML-134188, & ML-134257)	2
39	SD-024-01	Self-Tapping Screw 10-24 x 3/8 Slotted Pan Hd., Type TT	2
40	SD-037-58	Self-Tapping Screw 10-24 x 3/8 Hex Button Hd., Type F (ML-134118, ML-134188, & ML-134257)	2



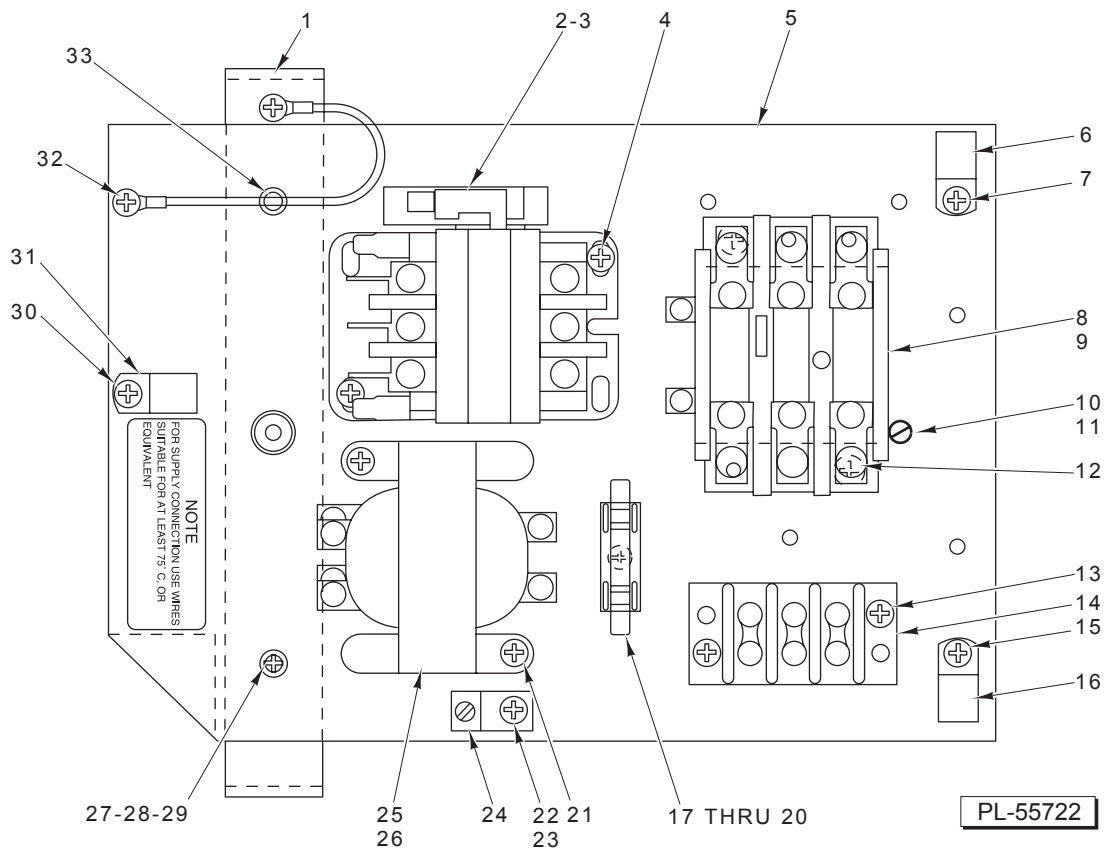
ELECTRICAL COMPONENT PANEL – 1 PHASE

ELECTRICAL COMPONENT PANEL – 1 PHASE

ILLUS.	PART NO.	NAME OF PART	AMT.
PL-55617			
1	00-274031	Bracket – Support (Component Panel) (Top Cover)	1
2	00-087713-037-2	Contactora (115 V., 60 Hz., 1 Ph.) (30 Amp.) (2 Pole)	1
3	00-087713-037-1	Contactora (208/240 V., 60 Hz., 1 Ph.) (30 Amp.) (2 Pole)	1
4	SD-015-20	Self-Tapping Screw 10-32 x 3/8 Phil. Pan Hd., Type TT	2
5	00-274027	Panel – Component Mounting	1
6	00-078752-00009	Clamp – Cable	1
7	SD-015-20	Self-Tapping Screw 10-32 x 3/8 Phil. Pan Hd., Type TT	1
8	SD-015-20	Self-Tapping Screw 10-32 x 3/8 Phil. Pan Hd., Type TT	2
9	00-088196-006-1	Relay – Thermal Overload (1 Ph.)	1
10	*	Heater Element (Overload Relay)	AR
11	SC-060-03	Mach. Screw 10-24 x 3/4 Slotted Rd. Hd.	1
12	WL-007-12	Lockwasher #10 External Shakeproof	1
**13	00-070486-00002	Cap – Capacitor End	1
14	SD-015-20	Self-Tapping Screw 10-32 x 3/8 Phil. Pan Hd., Type TT	1
15	00-078752-00009	Clamp – Cable	1
**16	00-070487-00018	Capacitor (Motor Start)	1
**17	SD-029-06	Self-Tapping Screw 10-24 x 1/2 Phil. Flat Hd., Type F (SST)	2
**18	00-066621-00001	Bracket – Capacitor (Motor Start)	1
**19	00-274034	Capacitor (Motor Run)	1
20	SD-015-20	Self-Tapping Screw 10-32 x 3/8 Phil. Pan Hd., Type TT	1
21	WL-007-12	Lockwasher #10 External Shakeproof	2
22	00-118544-00001	Lug – Solderless	1
**23	SD-015-20	Self-Tapping Screw 10-32 x 3/8 Phil. Pan Hd., Type TT	2
**24	00-274032	Bracket – Capacitor (Motor Run)	1
25	00-274033	Nut – Well (Component Bracket)	2
26	SC-060-85	Mach. Screw 10-24 x 1 Slotted Rd. Hd.	2
27	WL-007-12	Lockwasher #10 External Shakeproof	2
28	SD-015-20	Self-Tapping Screw 10-32 x 3/8 Phil. Pan Hd., Type TT	1
29	00-078752-00009	Clamp – Cable	1
30	SD-015-20	Self-Tapping Screw 10-32 x 3/8 Phil. Pan Hd., Type TT	2
31	00-087525-00669	Lead Wire Assy.	1
	00-113703	Cable Tie	AR

*Give Elec. Spec., Mach. Model, & Motor Type.

**GE Motor Capacitors Mounted on Motor, Not Serviceable (See Page 23).



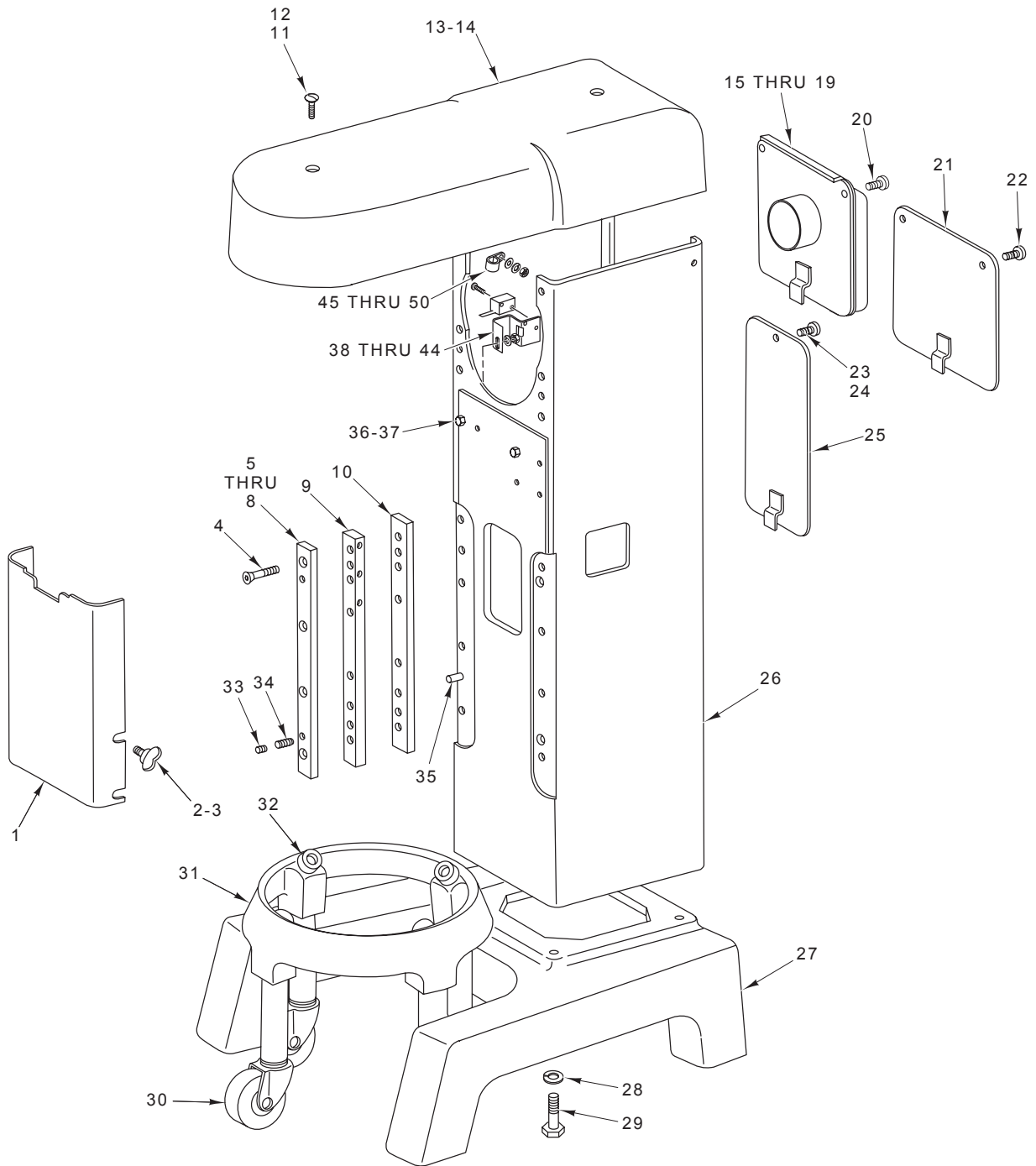
ELECTRICAL COMPONENT PANEL – 3 PHASE

ELECTRICAL COMPONENT PANEL – 3 PHASE

ILLUS.	PART NO.	NAME OF PART	AMT.
	PL-55722		
1	00-274031	Bracket – Support (Component Panel) (Top Cover)	1
2	00-087713-080-1	Contactora (208/240 V., 60 Hz., 3 Ph.) (30 Amp.) (3 Pole)	1
**3	00-087713-080-2	Contactora (480 V., 60 Hz., 3 Ph.) (30 Amp.) (3 Pole)	1
4	SD-015-20	Self-Tapping Screw 10-32 x 3/8 Phil. Pan Hd., Type TT	2
5	00-274027	Panel – Component Mounting	1
6	00-078752-00009	Clamp – Cable	1
7	SD-015-20	Self-Tapping Screw 10-32 x 3/8 Phil. Pan Hd., Type TT	1
8	00-088196-005-1	Relay – Thermal Overload (3 Ph.)	1
9	*	Heater Element (Overload Relay)	AR
10	SC-060-03	Mach. Screw 10-24 x 3/4 Slotted Rd. Hd.	1
11	WL-007-12	Lockwasher #10 External Shakeproof	1
12	SD-015-20	Self-Tapping Screw 10-32 x 3/8 Phil. Pan Hd., Type TT	1
13	SD-033-72	Self-Tapping Screw 10-32 x 7/8 Phil. Pan Hd., Type TT	2
14	00-271336	Terminal Block	1
15	SD-015-20	Self-Tapping Screw 10-32 x 3/8 Phil. Pan Hd., Type TT	1
16	00-078752-00009	Clamp – Cable	1
**17	00-294436-00003	Block – Fuse	1
**18	FE-017-03	Fuse (2 Amp.) (W/Brake)	1
**19	FE-009-25	Fuse (0.5 Amp.)	1
**20	SD-015-38	Self-Tapping Screw 6-32 x 3/8 Phil. Pan Hd., Type TT	1
**21	SD-015-20	Self-Tapping Screw 10-32 x 3/8 Phil. Pan Hd., Type TT	1
22	SD-015-20	Self-Tapping Screw 10-32 x 3/8 Phil. Pan Hd., Type TT	1
23	WL-007-12	Lockwasher #10 External Shakeproof	2
24	00-118544-00001	Lug – Solderless	1
**25	00-101935	Transformer	1
**26	00-436960	Transformer (W/Brake)	1
27	00-274033	Nut – Well (Component Bracket)	2
28	SC-060-85	Mach. Screw 10-24 x 1 Slotted Rd. Hd.	2
29	WL-007-12	Lockwasher #10 External Shakeproof	2
30	SD-015-20	Self-Tapping Screw 10-32 x 3/8 Phil. Pan Hd., Type TT	1
31	00-078752-00009	Clamp – Cable	1
32	SD-015-20	Self-Tapping Screw 10-32 x 3/8 Phil. Pan Hd., Type TT	2
33	00-087525-00669	Lead Wire Assy.	1
	00-113703	Cable Tie	AR

*Give Elec. Spec., Mach. Model, & Motor Type.

**Above 250 V. Machines.

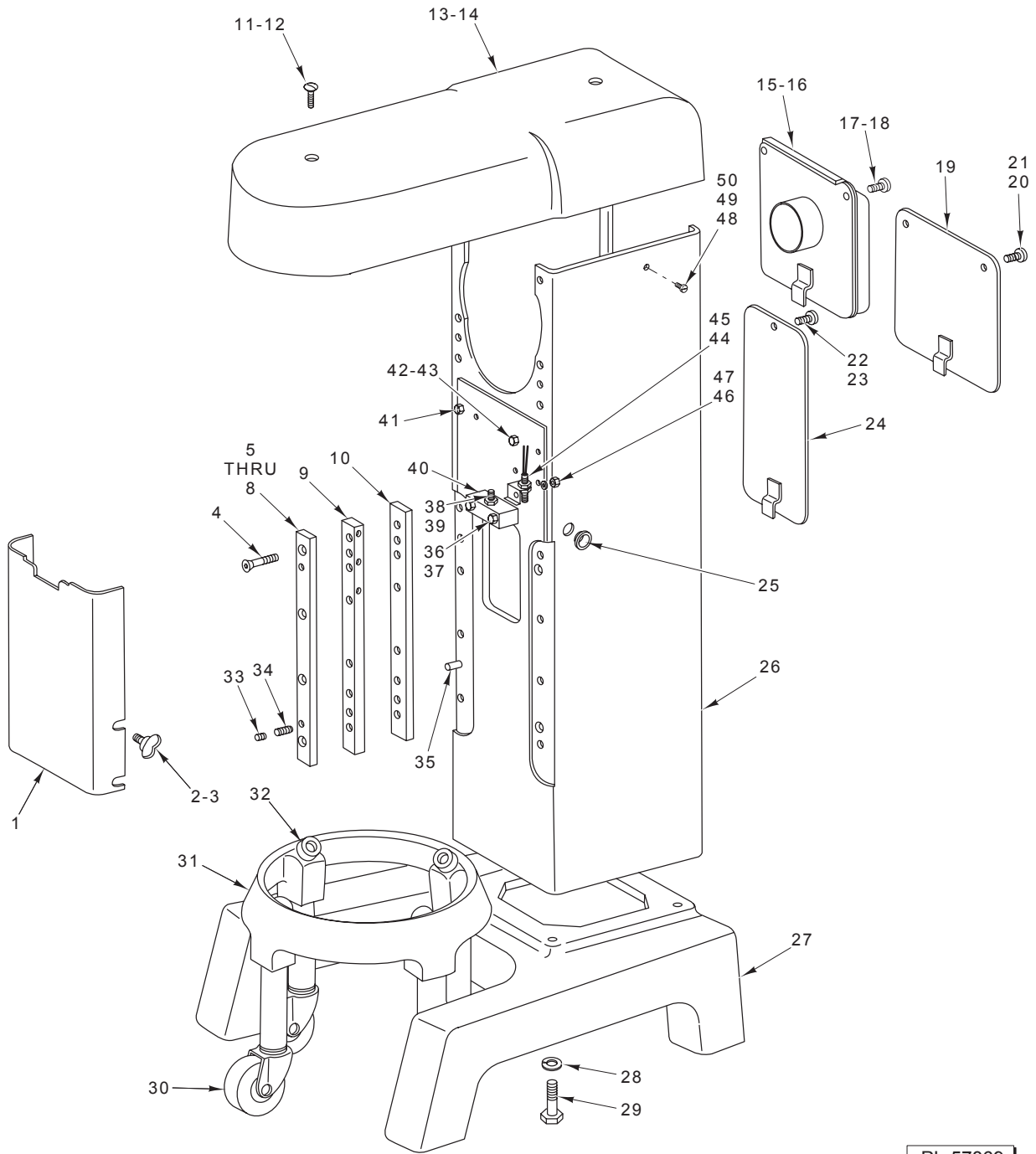


PL-57868

**BASE AND COLUMN
(ML-104483, ML-104484, & ML-134118)**

**BASE AND COLUMN
(ML-104483, ML-104484, & ML-134118)**

ILLUS. PL-57868	PART NO.	NAME OF PART	AMT.
1	00-437824	Cover – Bowl Support	1
2	00-070641-00001	Thumb Screw (ML-104483 & ML-104484)	4
3	SC-128-74	Mach. Screw 1/4-20 x 5/8 Tx. Button Hd. (SST) (ML-134118)	4
4	SC-061-06	Cap Screw 5/16-18 x 1 3/4 Hex Flat Hd.	10
5	00-435267	Gib – Upper	2
6	00-435264-00001	Shim – Gib (0.003 Thk.)	AR
7	00-435264-00002	Shim – Gib (0.005 Thk.)	AR
8	00-435264-00003	Shim – Gib (0.010 Thk.)	AR
9	00-435265	Gib – Center	2
10	00-435266	Gib – Lower	2
11	SC-023-19	Mach. Screw 1/4-20 x 3/4 Slotted Oval Hd. (SST) (ML-104483 & ML-104484)	2
12	SC-128-64	Mach. Screw 1/4-20 x 1 Tx. Flat Hd. (SST) (ML-134118)	2
13	00-274038	Cover – Top Assy. (Incls. Item 14)	1
14	00-123687-00007	Gasket	1
15	00-435230	Vent – Air Intake (1 Ph.) (ML-104484)	1
16	00-435270	Gasket – Air	1
17	00-274668	Vent – Air Intake (1 Ph.) (ML-104483)	1
18	00-435236	Cover – Motor (3 Ph.) (ML-104484)	1
19	00-271300-00001	Cover – Motor (3 Ph.) (ML-104483)	1
20	SC-053-41	Mach. Screw 1/4-20 x 1/2 Slotted Truss Hd. (SST) (ML-104483 & ML-104484)	2
21	00-875377	Cover – Motor (ML-134118)	1
22	SC-128-74	Mach. Screw 1/4-20 x 5/8 Tx. Button Hd. (SST) (ML-134118)	2
23	SC-053-41	Mach. Screw 1/4-20 x 1/2 Slotted Truss Hd. (SST) (ML-104483 & ML-104484)	1
24	SC-128-74	Mach. Screw 1/4-20 x 5/8 Tx. Button Hd. (SST) (ML-134118)	1
25	00-271299-00001	Cover – Lift Mechanism	1
26	00-875476-00002	Column	1
27	00-271227-002-2	Base Assy.	1
28	WL-004-11	Lockwasher 1/2 Medium	4
29	SC-120-28	Cap Screw 1/2-13 x 2 Hex Hd.	4
30	00-087668-00002	Caster	4
31	00-875748	Bowl Truck Assy.	1
32	00-018682-00001	Bumper	4
33	SC-047-30	Set Screw 5/16-18 x 5/16 Hdls., Flat Pt.	2
34	SC-112-65	Set Screw 5/16-18 x 3/4 Hdls., Cone Pt.	2
35	00-011800-00118	Dowel	2
36	SC-036-26	Cap Screw 5/16-18 x 7/8 Hex Hd.	2
37	WL-003-41	Lockwasher 5/16 Light	2
38	00-438596	Bracket – Switch	1
39	00-438625	Insulator	1
40	00-087711-00248	Switch – Bowl Height	1
41	SC-021-05	Mach. Screw 4-40 x 5/8 Slotted Rd. Hd. (SST)	2
42	WL-003-01	Lockwasher #4 Light	2
43	WL-003-41	Lockwasher 5/16 Light	1
44	NS-013-14	Nut 5/16-18 Hex	1
45	00-078752-00011	Clamp – Wire	1
46	SC-119-53	Mach. Screw 8-32 x 3/4 Slotted Pan Hd. (SST)	1
47	SC-128-66	Mach. Screw 8-32 x 1/2 Tx. Button Hd. (SST) (ML-134118)	1
48	WS-019-16	Washer	1
49	WL-007-07	Lockwasher #8 External Shakeproof	1
50	NS-009-12	Mach. Nut 8-32 Hex	1



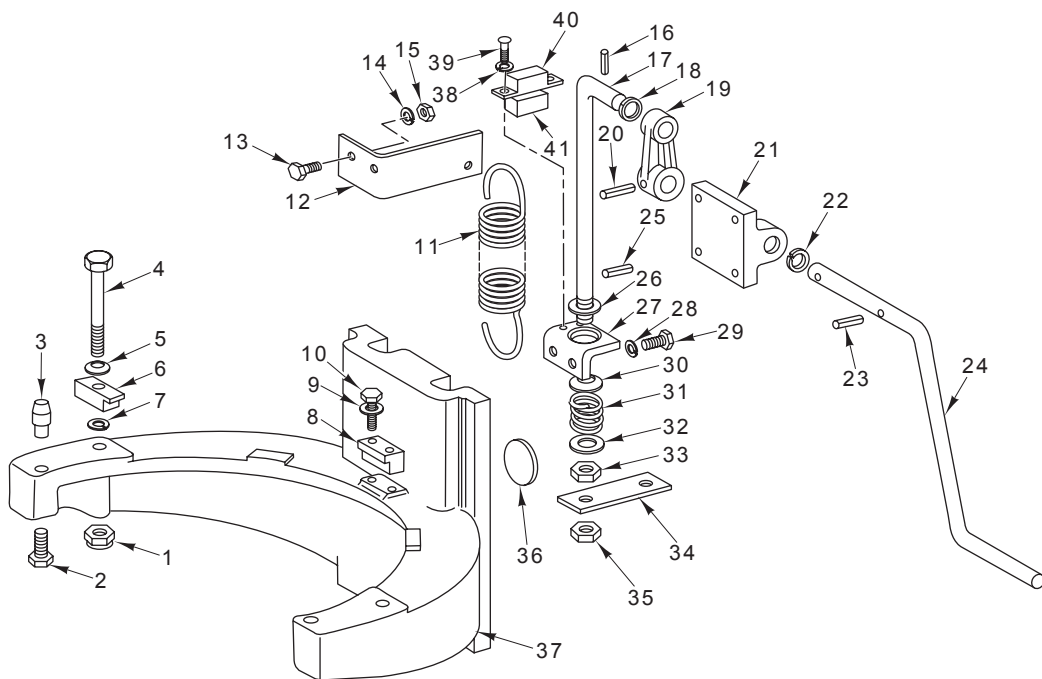
**BASE AND COLUMN
(ML-134185, ML-134188, ML-134254, & ML-134257)**

**BASE AND COLUMN
(ML-134185, ML-134188, ML-134254, & ML-134257)**

ILLUS. PL-57869	PART NO.	NAME OF PART	AMT.
1	00-435262	Cover – Bowl Support	1
2	00-070641-00001	Thumb Screw (ML-134185 & ML-134254)	4
3	SC-128-74	Mach. Screw 1/4-20 x 5/8 Tx. Button Hd. (SST) (ML-134188 & ML-134257)	4
4	SC-061-06	Cap Screw 5/16-18 x 1 3/4 Hex Flat Hd.	10
5	00-435267	Gib – Upper	2
6	00-435264-00001	Shim – Gib (0.003 Thk.)	AR
7	00-435264-00002	Shim – Gib (0.005 Thk.)	AR
8	00-435264-00003	Shim – Gib (0.010 Thk.)	AR
9	00-435265	Gib – Center	2
10	00-435266	Gib – Lower	2
11	SC-023-19	Mach. Screw 1/4-20 x 3/4 Slotted Oval Hd. (SST) (ML-134185)	2
12	SC-128-64	Mach. Screw 1/4-20 x 1 Tx. Flat Hd. (SST) (ML-134188 & ML-134257)	2
13	00-274038	Cover – Top Assy. (Incls. Item 14)	1
14	00-123687-00007	Gasket	1
15	00-435270	Gasket – Air Intake	1
16	00-479512	Vent – Air Intake (1 Ph.)	1
17	SC-053-41	Mach. Screw 1/4-20 x 1/2 Slotted Truss Hd. (SST) (ML-134185)	2
18	SC-121-38	Mach. Screw 1/4-20 x 5/8 Hex Button Hd. (SST) (ML-134188)	2
19	00-875377	Cover – Motor (3 Ph.)	1
20	SC-053-41	Mach. Screw 1/4-20 x 1/2 Slotted Truss Hd. (SST) (ML-134185)	2
21	SC-128-74	Mach. Screw 1/4-20 x 5/8 Tx. Button Hd. (SST) (ML-134188)	2
22	SC-053-41	Mach. Screw 1/4-20 x 1/2 Slotted Truss Hd. (SST) (ML-134185 & ML-134254)	1
23	SC-128-74	Mach. Screw 1/4-20 x 5/8 Tx. Button Hd. (SST) (ML-134188 & ML-134257)	1
24	00-271299-00001	Cover – Lift Mechanism	1
25	00-271343	Grommet – Handle	1
26	00-875476-00002	Column	1
27	00-271227-002-2	Base Assy.	1
28	WL-004-11	Lockwasher 1/2 Medium	4
29	SC-120-28	Cap Screw 1/2-13 x 2 Hex Hd.	4
30	00-087668-00002	Caster	4
31	00-875748	Bowl Truck Assy.	1
32	00-018682-00001	Bumper	4
33	SC-047-30	Set Screw 5/16-18 x 5/16 Hdls., Flat Pt.	2
34	SC-112-65	Set Screw 5/16-18 x 3/4 Hdls., Cone Pt.	2
35	00-011800-00118	Dowel	2
36	SC-036-11	Cap Screw 1/4-20 x 2 Hex Hd.	2
37	WL-006-16	Lockwasher 1/4 Light	2
38	SC-109-85	Set Screw 5/16-18 x 1 1/2 Hdls., Oval Pt.	1
39	NS-017-08	Jam Nut 5/16-18 Hex	1
40	00-271267	Block – Stop	1
41	SC-063-33	Set Screw 3/8-16 x 3/8 Hdls., Flat Pt.	2
42	SC-036-06	Cap Screw 1/4-20 x 1 Hex Hd.	4
43	WL-006-16	Lockwasher 1/4 Light	4
44	00-087711-306-1	Switch – Bowl Height Sensing	1
45	00-438577	Bracket – Sensor	1
46	WL-006-16	Lockwasher 1/4 Light (SST) (Use to Mount Item 40)	1
47	NS-013-02	Nut 1/4-20 Hex (Use to Mount Item 40)	1
48	SC-053-46	Mach. Screw 1/4-20 x 3/4 Slotted Truss Hd. (SST)	2
49	SC-124-50	Mach. Screw 1/4-20 x 3/4 Tx. Button Hd. (SST)	2
50	00-522815	Loctite 271 Size 31 (50cc)	2

**BOWL SUPPORT
(ML-104483, ML-104484, & ML-134118) (CONT.)**

ILLUS. PL-55773	PART NO.	NAME OF PART	AMT.
10	00-070044	Retainer – Bowl.....	1
11	SC-036-09	Cap Screw 1/4-20 x 1 1/4 Hex Hd.	2
12	WL-006-16	Lockwasher 1/4 Light (SST)	2
13	WS-010-17	Washer	1
14	NS-017-16	Jam Nut 3/8-16 Hex	1
15	SC-124-91	Cap Screw 3/8-16 x 2 1/2 Hex Hd.	1
16	00-435252-00002	Bearing – Bowl Lift Screw	1
17	BB-005-30	Ball Bearing	1
18	00-024193	Gear – Bowl Lift Screw (31T)	1
19	WS-010-17	Washer	1
20	NS-034-04	Lock Nut N.D. #N-03	1
21	WL-012-04	Lockwasher N.D. #W-03	1
22	00-024195-00002	Gear – Bowl Lift Miter (23T)	1
23	RR-005-02	Retaining Ring (Spirolox)	1
24	KW-003-03	Key – Woodruff 1/8 x 1/2 Lg.	1
25	NS-032-29	Stop Nut 1/2-20 Flexloc	1
26	00-024196-00002	Pinion – Bowl Lift Miter (23T)	1
27	00-012430-00041	Key 3/16 Sq. x 5/8 Lg.	1
28	RP-002-06	Roll Pin 1/4 Dia. x 1 Lg.	2
29	00-089684	Handwheel Bracket & Bearing Assy.	1
30	PG-007-19	Grooved Pin – Type E 1/4 x 2 3/4	1
31	00-024191	Shaft – Hand Wheel	1
32	00-024192	Gear – Bowl Lift (41T)	1
33	00-024614-00003	Washer – Miter Gear Spacer (0.086 Thk.)	AR
34	00-024614-00004	Washer – Miter Gear Spacer (0.081 Thk.)	AR
35	00-024614-00005	Washer – Miter Gear Spacer (0.076 Thk.)	AR
36	00-024614-00006	Washer – Miter Gear Spacer (0.071 Thk.)	AR
37	00-024194	Shaft – Miter Gear	1
38	RR-005-02	Retaining Ring (Spirolox)	1
39	00-012430-00043	Key 3/16 Sq. x 7/16 Lg.	1
40	WS-010-17	Washer	2
41	SC-036-53	Cap Screw 3/8-16 x 7/8 Hex Hd.	1
42	WL-004-06	Lockwasher 3/8 Light	1
43	00-024201	Retainer – Bowl Lift Nut	1
44	00-024609-00001	Ring – Handwheel Bracket Clamping	1
45	SC-011-95	Mach. Screw 5/16-18 x 1 Fil. Hd.	4
46	WL-003-48	Lockwasher 5/16 High Collar	4
47	00-024198	Nut – Bowl Lift Screw	1
48	00-435268-00002	Lift – Bowl	1
49	SC-037-69	Cap Screw 3/16-18 x 1 3/4 Hex Hd.	2
50	WL-003-41	Lockwasher 5/16 Light	2
51	00-438597	Bar – Switch	1
52	00-290052-00001	Screw – Bowl Lift	1
53	00-435269-00002	Support – Bowl	1
54	00-024765	Handle – Bowl Lift Handwheel	1
55	00-435235	Hand Wheel & Handle Assy. (Incls. Item 54)	1
56	NS-048-20	Stop Nut 10-24	4
57	NS-048-17	Stop Nut 3/8-16 Flexloc	1
58	NS-048-24	Lock Nut 3/8-16 (ML-134118)	1
59	00-438600	Plate – Bowl Lock	1
60	SC-053-46	Mach. Screw 1/4-20 x 3/4 Slotted Truss Hd. (SST)	2
61	WS-003-07	Washer	2
62	NS-032-08	Stop Nut 1/4-20 Flexloc	2
63	00-438575	Spring – Torsion	1
64	00-438516	Spacer – Lever	1
65	00-438494	Spring – Extension	1
66	PC-006-32	Cotter Pin	1
67	SC-018-20	Mach. Screw 10-24 x 1/2 Slotted Pan Hd.	4
68	SC-086-24	Shoulder Screw 1/2 Dia. x 1 1/2 Soc. Hex Hd.	1
69	00-438413-00002	Lever – Bowl Lock	1
70	00-875737-00001	Solenoid (115 V. Coil)	1
71	00-875737-00002	Solenoid (230 V. Coil)	1

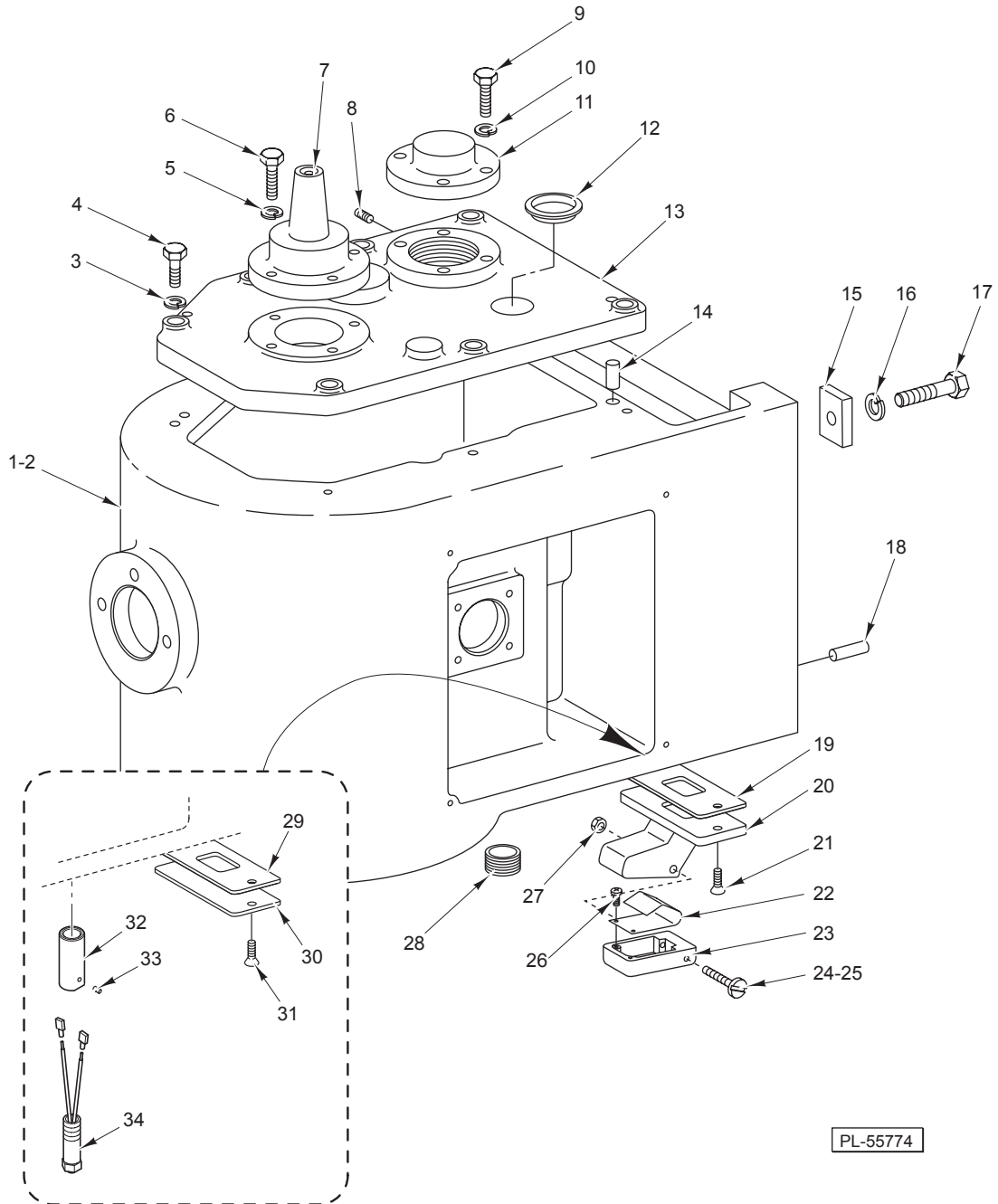


PL-55618

**BOWL SUPPORT AND LIFT UNIT
(ML-134185, ML-134188, ML-134254, & ML-134257)**

**BOWL SUPPORT AND LIFT UNIT
(ML-134185, ML-134188, ML-134254, & ML-134257)**

ILLUS. PL-55618	PART NO.	NAME OF PART	AMT.
1	NS-036-19	Stop Nut ⁵ / ₁₆ -18 Hex (SST)	2
2	SC-037-75	Cap Screw ⁵ / ₁₆ -18 x ³ / ₄ Hex Hd.	2
3	00-070411	Pin – Bowl Locating	2
4	SC-062-28	Cap Screw ⁵ / ₁₆ -18 x 3 ¹ / ₂ Hex Hd.	2
5	00-070087	Washer – Spring	2
6	00-070057	Clamp – Bowl	2
7	WS-004-18	Washer	2
8	00-070044	Retainer – Bowl	1
9	WL-006-16	Lockwasher ¹ / ₄ Light (SST)	2
10	SC-036-09	Cap Screw ¹ / ₄ -20 x 1 ¹ / ₄ Hex Hd.	2
11	00-271342	Spring – Counterbalance	1
12	00-271345	Bracket – Spring	1
13	SC-036-06	Cap Screw ¹ / ₄ -20 x 1 Hex Hd.	2
14	WL-006-16	Lockwasher ¹ / ₄ Light (SST)	2
15	NS-013-02	Nut ¹ / ₄ -20 Hex	2
16	RP-002-25	Roll Pin ¹ / ₈ Dia. x ⁷ / ₈ Lg.	1
17	00-068718	Rod – Bowl Lift	1
18	WS-008-47	Washer	1
19	00-271259-00002	Arm – Bowl Lift	1
20	RP-002-26	Roll Pin ¹ / ₄ Dia. x 1 ¹ / ₈ Lg.	1
21	00-271269-00002	Bearing – Bowl Lift Handle	1
22	WS-020-01	Washer (SST)	1
23	RP-002-25	Roll Pin ¹ / ₈ Dia. x ⁷ / ₈ Lg.	1
24	00-271322	Handle – Bowl Lift	1
25	RP-002-10	Roll Pin ³ / ₁₆ Dia. x 1 Lg.	1
26	WS-008-47	Washer	1
27	00-438576	Bracket – Lower Lift	1
28	WL-003-41	Lockwasher ⁵ / ₁₆ Light	2
29	SC-037-75	Cap Screw ⁵ / ₁₆ -18 x ³ / ₄ Hex Hd.	2
30	00-070131	Washer – Cup Bowl Lift	1
31	00-070104	Spring – Bowl Lift	1
32	WS-008-47	Washer	1
33	NS-017-31	Jam Nut ¹ / ₂ -20 Hex	1
34	00-271346	Bracket – Lower Spring Lift	1
35	NS-017-31	Jam Nut ¹ / ₂ -20 Hex	1
36	00-271319	Bumper	2
37	00-435269-00001	Support – Bowl	1
38	WL-003-01	Lockwasher #4 Light	2
39	SC-021-01	Mach. Screw 4-40 x ¹ / ₄ Slotted Rd. Hd. (SST)	2
40	00-120332	Retainer – Magnet	1
41	00-111941	Magnet	1

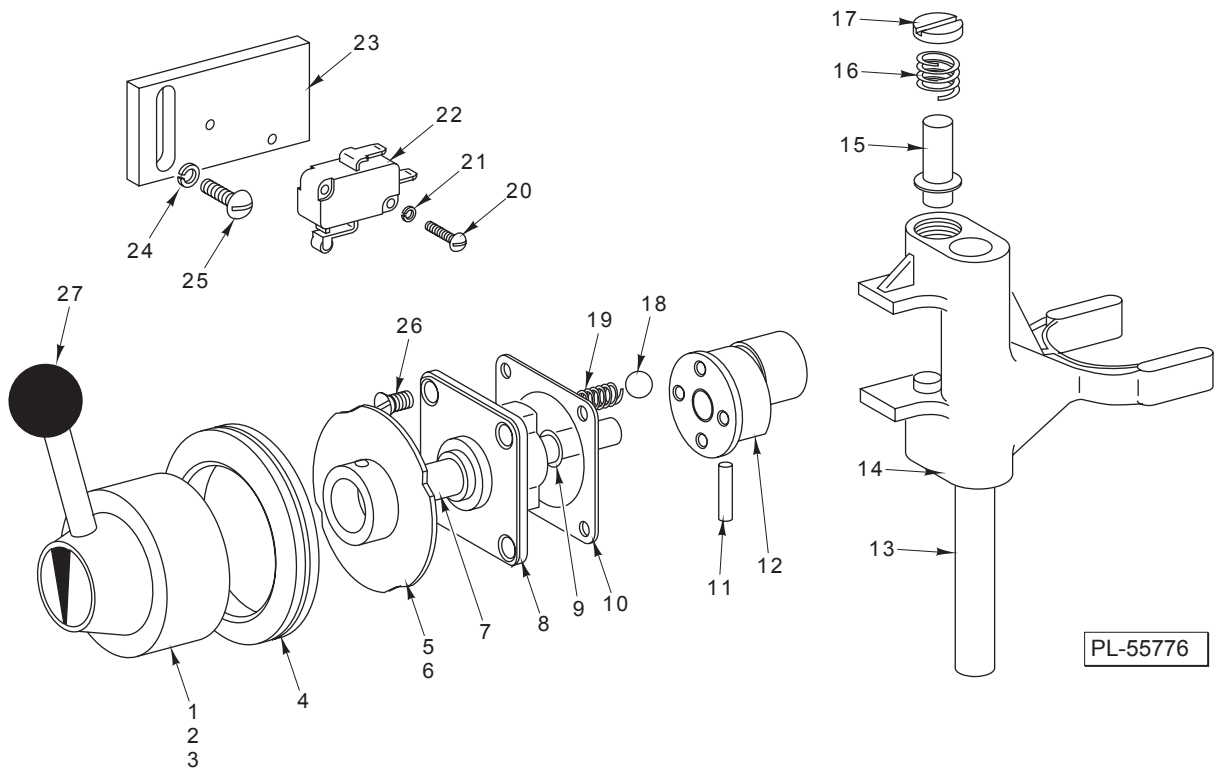


PL-55774

TRANSMISSION CASE

TRANSMISSION CASE

ILLUS. PL-55774	PART NO.	NAME OF PART	AMT.
1	00-271206-002-2	Case – Transmission (ML-104483, ML-104484, & ML-134118)	1
2	00-271206-003-2	Case – Transmission (ML-134185, ML-134188, ML-134254, & ML-134257)	1
3	WL-003-44	Lockwasher ⁵ / ₁₆ Medium	7
4	SC-120-38	Cap Screw ⁵ / ₁₆ -18 x 1 Hex Hd.	7
5	WL-003-37	Lockwasher ¹ / ₄ Medium	4
6	SC-036-06	Cap Screw ¹ / ₄ -20 x 1 Hex Hd.	4
7	00-271222-00002	Retainer – Bearing (Planetary Shaft)	1
8	SC-047-70	Set Screw 10-32 x ³ / ₈ Hdls., Cup Pt.	2
9	SC-036-06	Cap Screw ¹ / ₄ -20 x 1 Hex Hd.	4
10	WL-003-37	Lockwasher ¹ / ₄ Medium	4
11	00-271225-00002	Retainer – Bearing (Worm Gear Shaft)	1
12	00-064871	Plug – Friction	1
13	00-271218-002-1	Transmission Case Cover Assy.	1
14	00-011800-00249	Dowel	2
15	00-271340	Bar – Reinforcing	6
16	WL-004-06	Lockwasher ³ / ₈ Medium	6
17	SC-116-83	Cap Screw ³ / ₈ -16 x 1 ¹ / ₂ Hex Hd.	6
18	00-011800-00118	Dowel	2
19	00-437809	Gasket – Reed Housing	1
20	00-437793-00002	Housing – Reed	1
21	SC-022-22	Mach. Screw 10-24 x ³ / ₄ Slotted Flat Hd. (SST)	2
22	00-437435	Spring – Reed Switch	1
23	00-087711-304-1	Housing – Reed Switch	1
24	SC-122-48	Mach. Screw 8-32 x 1 ³ / ₄ Slotted Rd. Hd. (SST)	1
25	SC-122-75	Mach. Screw 8-32 x 2 Hex Button Hd. (SST) (ML-134118 & ML-134188)	1
26	SC-018-50	Mach. Screw 6-32 x ¹ / ₄ Slotted Pan Hd.	2
27	NS-031-08	Nut – Stop Special 8-32 Hex (SST)	1
28	FP-085-17	Pipe Plug ⁵ / ₈ Hex Socket	1
29	00-437809	Gasket – Reed Housing (ML-134185, ML-134188, ML-134254, & ML-134257)	1
30	00-874974	Plate – Transmission Cover (ML-134185, ML-134188, ML-134254, & ML-134257)	1
31	SC-022-22	Mach. Screw 10-24 x ³ / ₄ Slotted Flat Hd.	2
32	00-874990	Extension – Bowl Guard Switch (ML-134185, ML-134188, ML-134254, & ML-134257)	1
33	SC-075-14	Set Screw 6-32 x ¹ / ₈ Hex Hdls., Cup Pt.	1
34	00-874958	Switch – Reed & Extension (ML-134185, ML-134188, ML-134254, & ML-134257)	1
	00-068288	Shim (Between Trans. Case & Column) (Not Shown)	AR

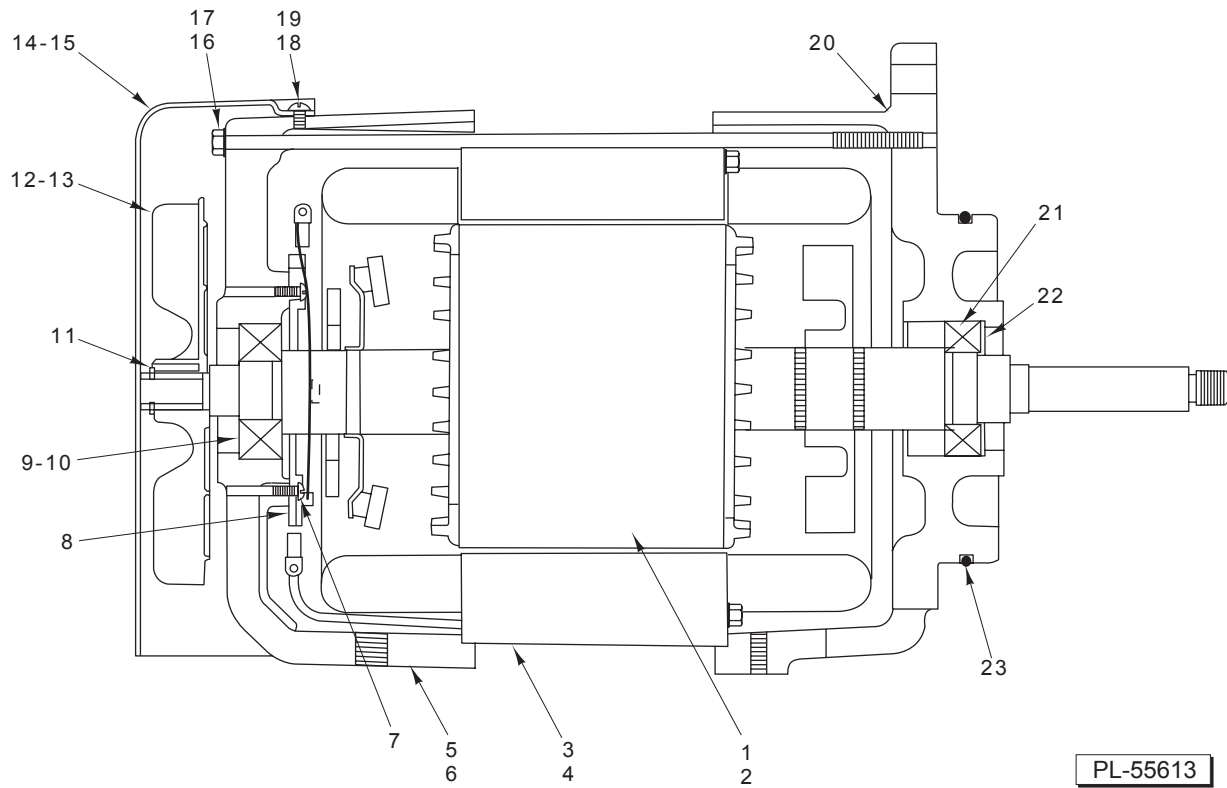


SHIFTER UNIT

SHIFTER UNIT

ILLUS.	PART NO.	NAME OF PART	AMT.
PL-55776			
1	SC-047-17	Set Screw 1/4-20 x 3/4 Hdls., Cup Pt.	1
2	00-291272	Shifter Handle Assy. (Incls. Items 1 & 27) (ML-104483, ML-104484, ML-134185, & ML-134254)	1
3	00-439306	Shifter Handle Assy. (Pinned) (Incls. Items 1 & 27) (ML-134118, ML-134188, & ML-134257)	1
4	00-110961	Grommet – Shifter Handle	1
5	00-271276	Cam – Interlock Assy.	1
6	SC-047-70	Set Screw 10-32 x 3/8 Hdls., Cup Pt.	1
7	00-875238	Shaft – Shifter	1
8	00-290115-00001	Plate – Index	1
9	00-067500-00044	O-Ring	1
10	00-023946	Gasket – Index Plate	1
11	PS-003-08	Spiral Pin 1/8 Dia. x 3/4 Lg.	1
12	00-873504	Cam – Gear Shifter	1
13	00-271291	Rod – Shifter Guide	1
14	00-271245-00002	Yoke – Shifter	1
15	00-012733	Plunger – Shifter Yoke	2
16	00-012734	Spring – Shifter Yoke	2
17	00-012732	Retainer – Shifter Yoke Spring	2
18	BA-002-09	Ball 1/4 Dia.	2
19	00-111170	Spring – Detent	2
20	SC-021-05	Mach. Screw 4-40 x 5/8 Slotted Rd. Hd. (SST)	2
21	WL-003-01	Lockwasher #4 Light	2
22	00-271315	Switch – Interlock (10 Amp., 250 VAC)	1
23	00-271277	Plate – Switch Mounting	1
24	WL-003-20	Lockwasher #10 Light	2
25	SC-009-25	Mach. Screw 10-24 x 5/8 Slotted Rd. Hd.	2
26	SC-014-57	Mach. Screw 10-24 x 1/2 Slotted Flat Hd.	4
27	00-070085	Knob – Shifter Handle Ball	1
	00-875240	Shifter – Sub-Assy.	1

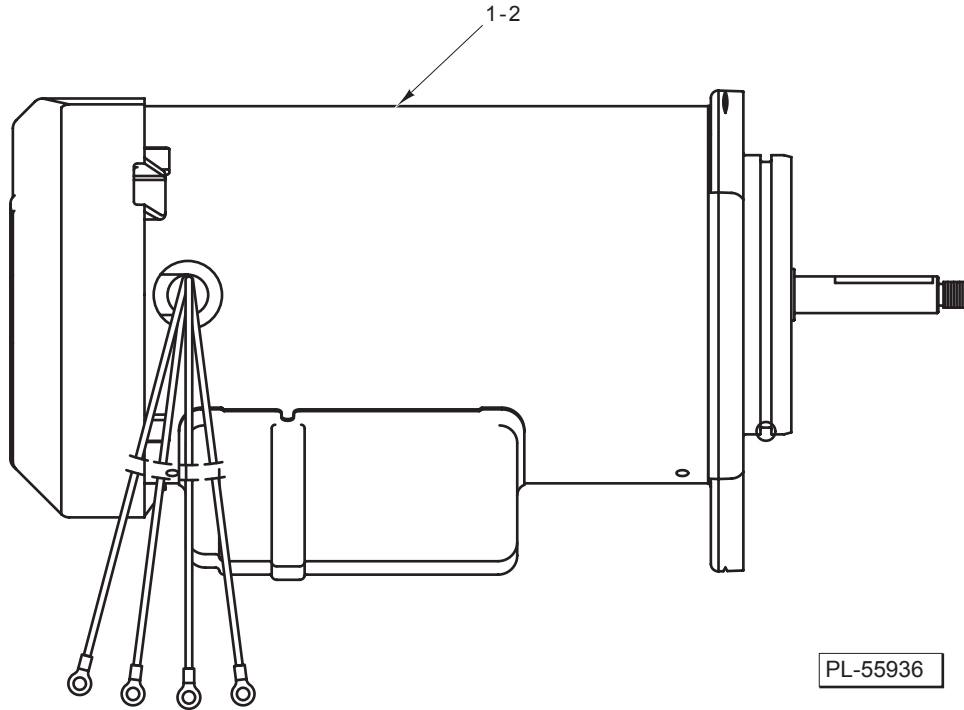
MODEL D340 MIXER REPLACEMENT PARTS



**MOTOR PARTS – 1 PHASE
(*NON GE MOTORS)**

ILLUS.	PART NO.	NAME OF PART	AMT.
	PL-55613		
1	00-022275-00276	Rotor Assy. (ML-104483)	1
2	00-022275-00277	Rotor Assy. (ML-104484) (Not Shown)	1
3	00-065477-162-1	Stator Assy. (120/240 V., 60 Hz.)	1
4	00-065477-162-2	Stator Assy. (208 V., 60 Hz.)	1
5	00-435867-00003	Housing – Motor (Rear) (ML-104484)	1
6	00-435867-00002	Housing – Motor (Rear) (ML-104483)	1
7	SC-009-49	Mach. Screw 6-32 x 3/8 Slotted Rd. Hd.	2
8	00-121110	Switch – Starting (Stationary Part) (1 Ph.)	1
9	BB-017-39	Ball Bearing (MRC SZZ-01-ST-A-92-C) (ML-104484)	1
10	BB-005-34	Ball Bearing (MRC 204 SZZ-01-ST-E-92-C) (ML-104483)	1
11	RR-011-05	Retaining Ring	1
12	00-274646-00002	Fan – Ventilating (ML-104484)	1
13	00-292466-00001	Fan – Ventilating (ML-104483)	1
14	00-435868	Shroud – Motor (ML-104483)	1
15	00-435869	Shroud – Motor (ML-104484) (Not Shown)	1
16	00-271335-00001	Bolt – Motor (1-Phase)	4
17	WL-003-22	Lockwasher #8	4
18	SC-018-34	Mach. Screw 8-32 x 1/2 Phil. Pan Hd.	3
19	WL-003-12	Lockwasher #8 Medium	3
**20	00-873505-00002	Housing – Motor (Front) (Not Shown)	1
21	BB-015-08	Ball Bearing (MRC 105KSZZ-01-ST-A-92-C)	1
22	SL-005-04	Spring – Loading	2
23	OR-001-01	O-Ring	1
	00-275152	Shim	AR
	00-435256-00003	Motor (120/240 V., 60 Hz.) (ML-104484)	1
	00-435256-00004	Motor (208 V., 60 Hz.) (ML-104484)	1

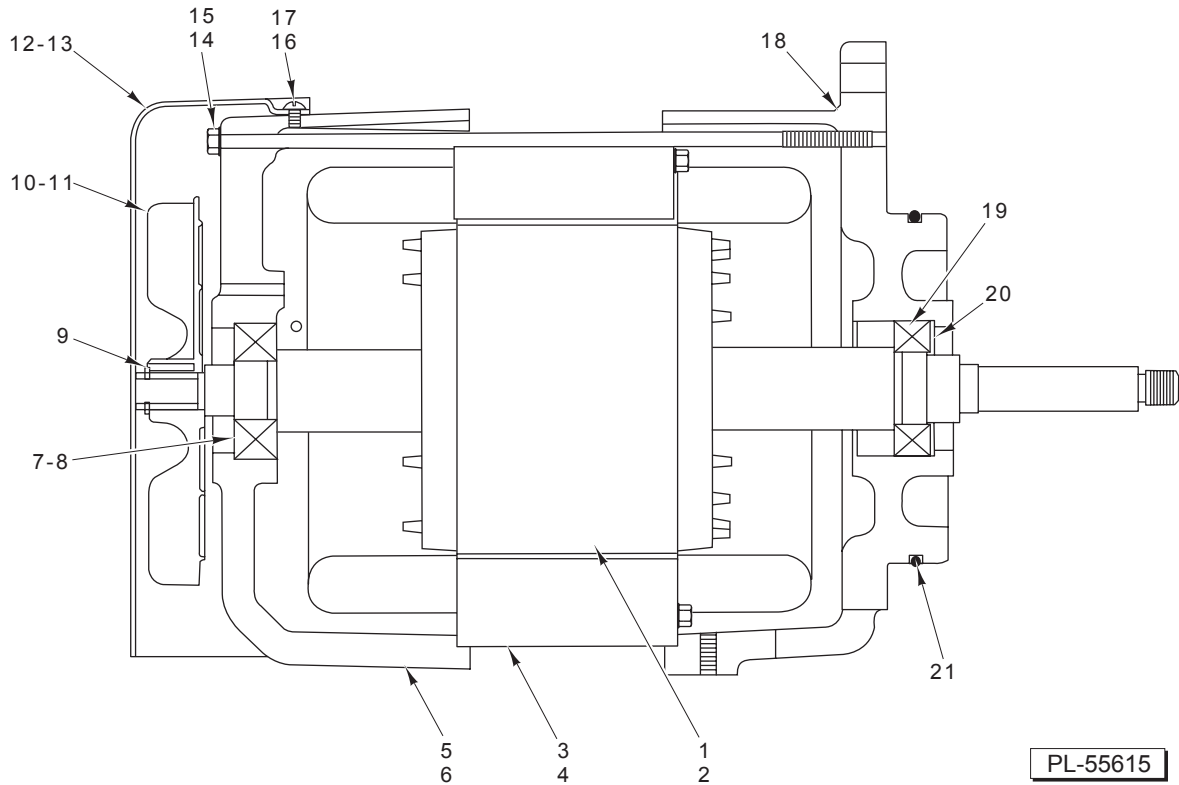
*For GE Motors, See Page 23.
**Also Order 67500-126 and See TSB 843E.



**MOTOR PARTS – 1 PHASE
(GENERAL ELECTRIC)**

ILLUS.	PART NO.	NAME OF PART	AMT.
PL-55936			
1	00-875334-00003	Motor (208 V., 60 Hz.) (ML-104483-BH Starting Serial No. 31-1260-524, 4/20/02) (ML-134185, ML-134188, ML-134254, & ML-134257)	1
2	00-875334-00004	Motor (120/240 V., 60 Hz.) (ML-104483, ML-134185, & ML-134254)	1

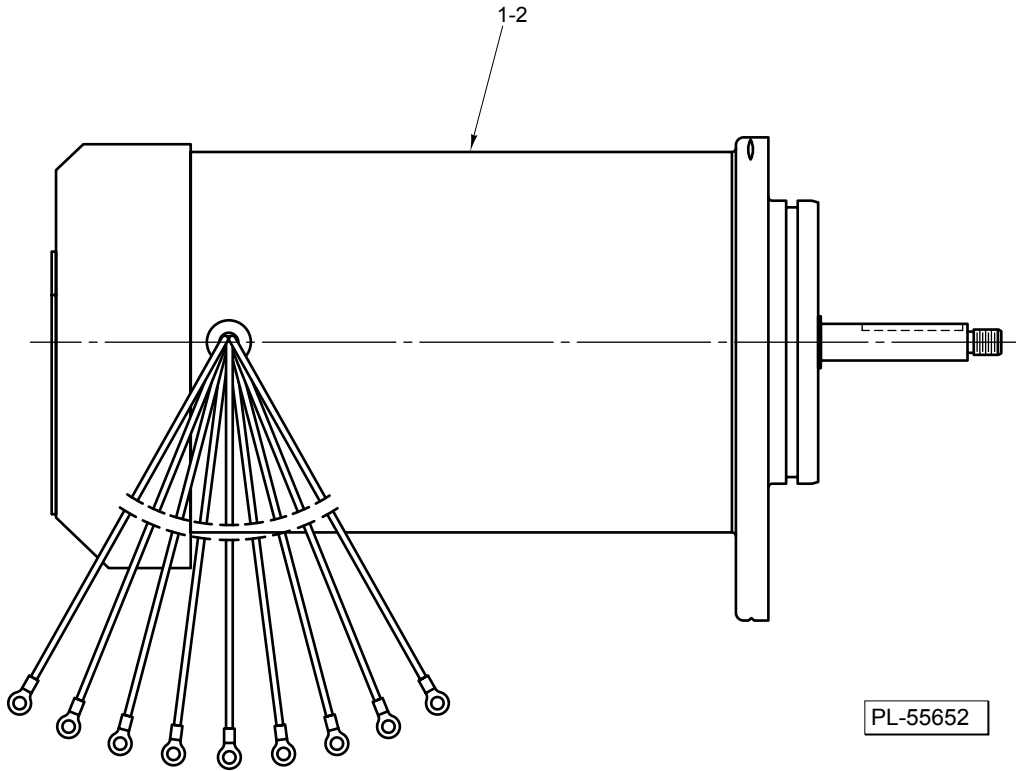
MODEL D340 MIXER REPLACEMENT PARTS



**MOTOR PARTS – 3 PHASE
(*NON GE MOTORS)**

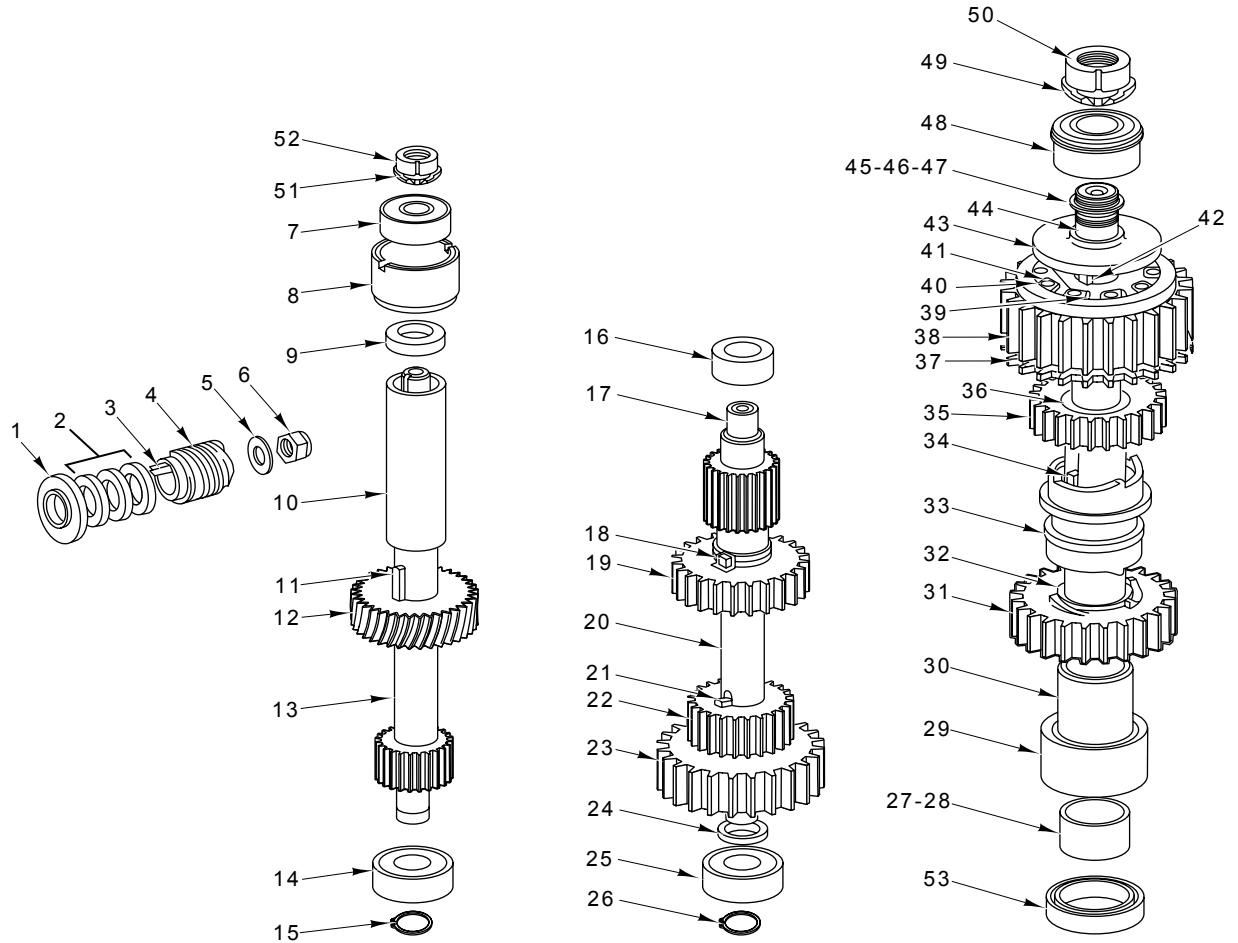
ILLUS.	PART NO.	NAME OF PART	AMT.
	PL-55615		
1	00-015747-00312	Rotor Assy. (ML-104483)	1
2	00-015747-00313	Rotor Assy. (ML-104484) (Not Shown)	1
3	00-065478-184-1	Stator Assy. (208 V., 60 Hz.)	1
4	00-065478-184-2	Stator Assy. (240/480 V., 60 Hz.)	1
5	00-435867-00002	Housing – Motor (Rear) (ML-104483)	1
6	00-435867-00003	Housing – Motor (Rear) (ML-104484)	1
7	BB-005-34	Ball Bearing (MRC 204 SZZ-01-ST-E-92-C) (ML-104483)	1
8	BB-017-39	Ball Bearing (MRC 205 SZZ-01-ST-A-92-C) (ML-104484)	1
9	RR-011-05	Retaining Ring	1
10	00-292466-00001	Fan – Ventilating (ML-104483)	1
11	00-274646-00002	Fan – Ventilating (ML-104484)	1
12	00-435868	Shroud – Motor (ML-104483)	1
13	00-435869	Shroud – Motor (ML-104484) (Not Shown)	1
14	00-271335-00002	Bolt – Motor (3 Phase)	4
15	WL-003-22	Lockwasher #10 Light	4
16	SC-018-34	Mach. Screw 8-32 x 1/2 Phil. Pan Hd.	3
17	WL-003-12	Lockwasher #8 Medium	3
**18	00-873505-00002	Housing – Motor (Front) (Not Shown)	1
19	BB-015-08	Ball Bearing (MRC 105KSZZ-01-ST-A-92-C)	1
20	SL-005-04	Spring – Loading	2
21	OR-001-01	O-Ring	1
	00-275152	Shim	AR
	00-435255-00003	Motor (208 V., 60 Hz.) (ML-104484)	1
	00-435255-00004	Motor (240/480 V., 60 Hz.) (ML-104484)	1

*For GE Motors, See Page 25.
**Also Order 67500-126 and See TSB 843E.



**MOTOR PARTS – 3 PHASE
(GENERAL ELECTRIC)**

ILLUS.	PART NO.	NAME OF PART	AMT.
PL-55652			
1	00-875334-00001	Motor (208 V., 60 Hz.) (ML-104483 Starting Serial No. 31-1240-016, 7/16/2001) (ML-134185, ML-134188, ML-134254, & ML-134257)	1
2	00-875334-00002	Motor (240 & 480 V., 60 Hz.) (ML-104483 Starting Serial No. 31-1240-016, 7/16/2001) (ML-134185 & ML-134254)	1

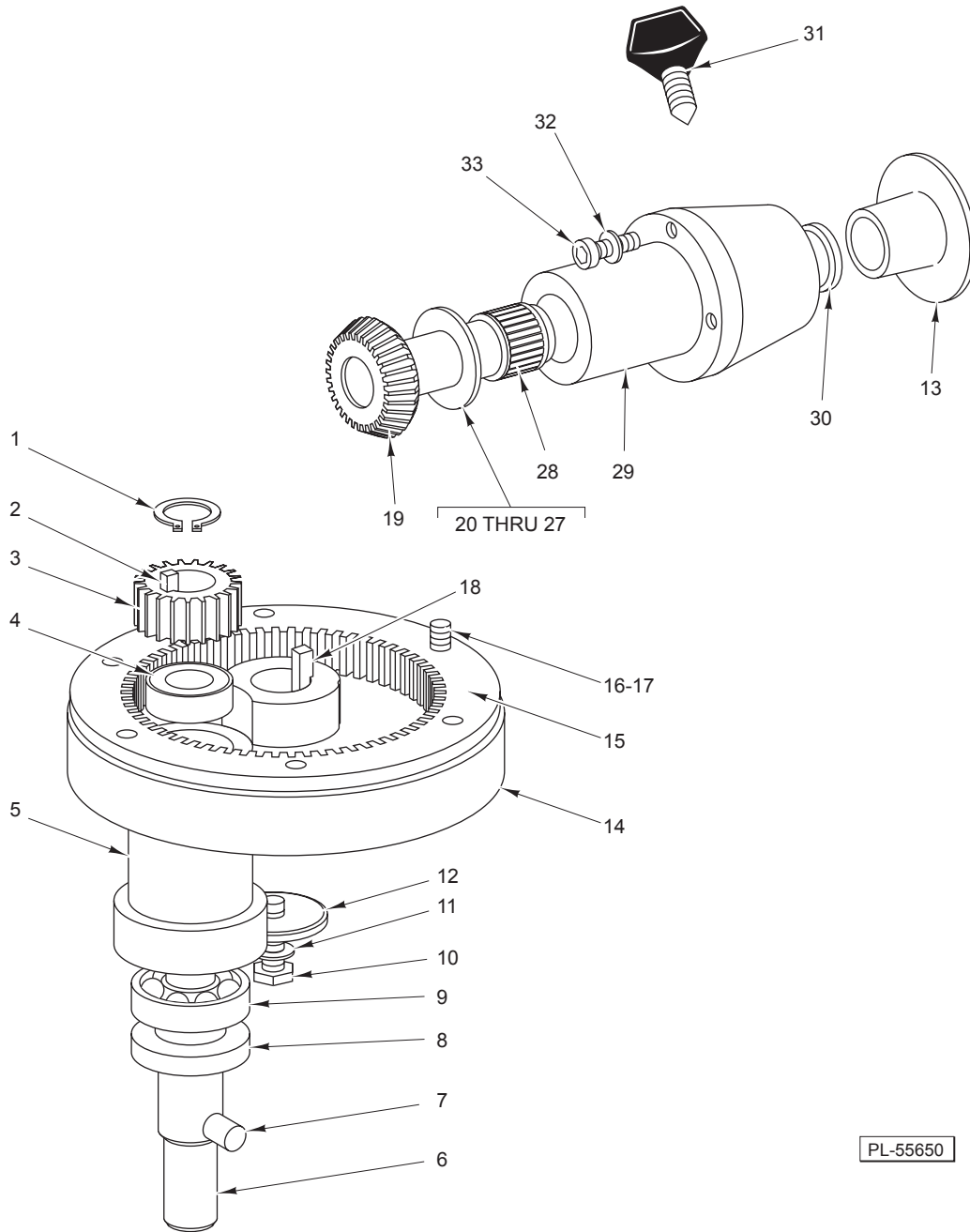


PL-55614

TRANSMISSION

TRANSMISSION

ILLUS. PL-55614	PART NO.	NAME OF PART	AMT.
1	00-271253	Deflector – Grease	1
2	00-077840	Washer – Belleville	6
3	00-012430-00069	Key ³ / ₁₆ Sq. x 1 ³⁹ / ₆₄ Lg.	1
4	00-271243	Worm (5T) (60 Hz.)	1
5	WS-021-01	Washer (SST)	1
6	NS-047-99	Lock Nut ⁷ / ₁₆ -20	1
7	BB-021-21	Ball Bearing (SKF-6203-2Z-NR-C3-UE)	1
8	00-271301	Sleeve – Worm Gear	1
9	00-271281	Spacer (Top of Worm Gear)	1
10	00-271280	Spacer (Worm Gear)	1
11	00-012430-00151	Key ¹ / ₂ Sq. x 1 ³ / ₁₆ Lg.	1
12	00-271244	Gear – Worm (29T) (60 Hz.)	1
13	00-271242	Shaft – Worm Gear	1
14	BB-020-06	Ball Bearing (Fafnir 204K DFA51580)	1
15	RR-004-07	Retaining Ring	1
16	BB-005-46	Ball Bearing (Fafnir 204K DDFS50545)	1
17	00-271238	Shaft – Transmission	1
18	00-012430-00138	Key ¹ / ₄ Sq. x ³ / ₄ Lg.	1
19	00-271239	Gear (36T)	1
20	00-271282	Spacer	1
21	00-012430-00152	Key ¹ / ₄ Sq. x ¹³ / ₁₆ Lg.	1
22	00-271240	Gear (27T)	1
23	00-271241	Gear (44T)	1
24	00-271283	Spacer – Lower Center Shaft	1
25	BB-020-06	Ball Bearing (Fafnir 204K DFA51580)	1
26	RR-004-07	Retaining Ring	1
27	00-067500-00070	O-Ring	1
28	00-437599	Seal – Hub	1
29	BB-015-36	Ball Bearing – Hoover (NSK 6007 DDUCE1 SRIS)	1
30	00-271278	Spacer – Lower Planetary Shaft	1
31	00-271237	Gear – Lower Clutch (46T)	1
32	00-271287	Bearing – Lower Clutch Gear	1
33	00-271226-00002	Sleeve – Clutch	1
34	00-012430-00182	Key ¹ / ₄ Sq. x 2 Lg.	2
35	00-271236	Gear – Upper Clutch (33T)	1
36	00-271285	Bearing – Upper Clutch Drive	1
37	00-271234-00002	Gear – Bevel (45T) (Also Order 271324-02)	1
38	00-271233	Gear – Roller Clutch (55T)	1
39	00-271289	Spring – Roller	10
40	00-271288	Roller – Clutch	10
41	00-271279	Sleeve – Drive	1
42	00-109070-00028	Key	1
43	00-271286	Spacer – Planetary Shaft	1
44	00-271229	Planetary Shaft	1
45	WS-030-25	Washer (0.002 Thk.)	AR
46	WS-030-26	Washer (0.003 Thk.)	AR
47	WS-030-27	Washer (0.010 Thk.)	AR
48	BB-021-22	Ball Bearing (SKF 5205A2ZNR3)	1
49	WL-012-06	Lockwasher N.D. #W-05	1
50	NS-034-06	Lock Nut Bearing N.D. #N-05	1
51	WL-012-04	Lockwasher N.D. #W-03	1
52	NS-034-04	Lock Nut N.D. #N-03	1
53	00-271341	Seal – Planetary Shaft	1
	00-437603	Planetary Shaft & Gear Assy. (Incls. Items 27 thru 32 & 44)	1
	00-274039	Center Shaft Assy. (Incls. Items 16 thru 26)	1

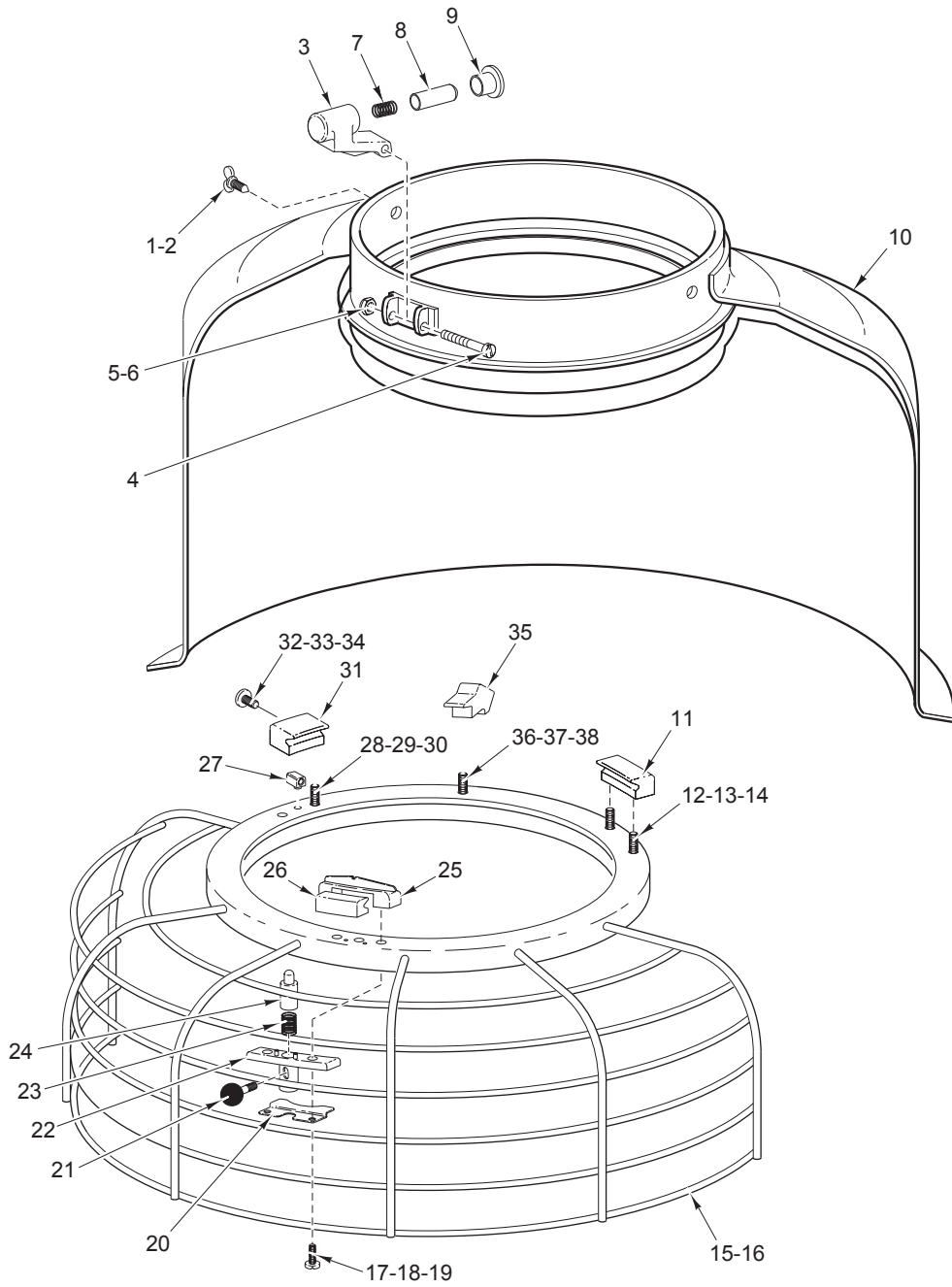


PLANETARY AND ATTACHMENT HUB

PLANETARY AND ATTACHMENT HUB

ILLUS. PL-55650	PART NO.	NAME OF PART	AMT.
1	RR-009-19	Retaining Ring	1
2	00-012430-00180	Key 1/4 Sq. x 1 3/16 Lg.	1
3	00-435548	Pinion – Agitator Shaft (18T)	1
*4	BB-021-34	Ball Bearing	1
*5	00-438240-00002	Planetary (Painted)	1
*6	00-438229	Agitator Shaft Assy. (Incls. Item 7)	1
7	00-070019	Pin – Agitator	1
*8	00-439286	Seal – Agitator Shaft	1
*9	BB-021-35	Ball Bearing	1
10	SC-062-58	Cap Screw 3/8-24 x 1 1/4 Hex Hd.	1
11	WL-006-27	Lockwasher 3/8 Light (SST)	1
12	00-070047-00001	Washer – Planetary	1
13	00-114824-00001	Plug – Attachment Hub	1
14	00-874984	Cup – Planetary Drip	1
*15	00-439291-00002	Gear – Internal (59T)	1
16	SC-089-19	Cap Screw 5/16-18 x 1 3/8 Soc. Hex Hd.	6
17	WL-003-48	Lockwasher 5/16 High Collar	6
18	00-012430-00173	Key 1/4 Sq. x 2 1/4 Lg.	1
19	00-271324-00002	Attachment Drive Gear (34T) & Expansion Plug Assy. (Also Order 271234-2)	1
20	00-070045-00002	Washer – Thrust (0.119 Thk.)	AR
21	00-070045-00003	Washer – Thrust (0.121 Thk.)	AR
22	00-070045-00004	Washer – Thrust (0.123 Thk.)	AR
23	00-070045-00005	Washer – Thrust (0.127 Thk.)	AR
24	00-070045-00001	Washer – Thrust (0.125 Thk.)	AR
25	00-070045-00006	Washer – Thrust (0.129 Thk.)	AR
26	BN-005-09	Needle Bearing (Torrington TRB 1828)	1
27	BN-005-10	Needle Bearing (Torrington NTA-1828)	1
28	BN-002-12	Needle Bearing	2
29	00-070511-00003	Attachment Hub & Bearing Assy. (Incls. Item 28)	1
30	00-070090	Seal – Attachment Hub	1
31	00-108197-00001	Thumb Screw	1
32	WL-003-43	Lockwasher 5/16 Light	3
33	SC-040-50	Cap Screw 5/16-18 x 2 1/4 Soc. Hex Hd.	3
*	00-438230	Planetary Assy. (Incls. Items 1 thru 6, 8, & 9)	1

*See TSB 787B.

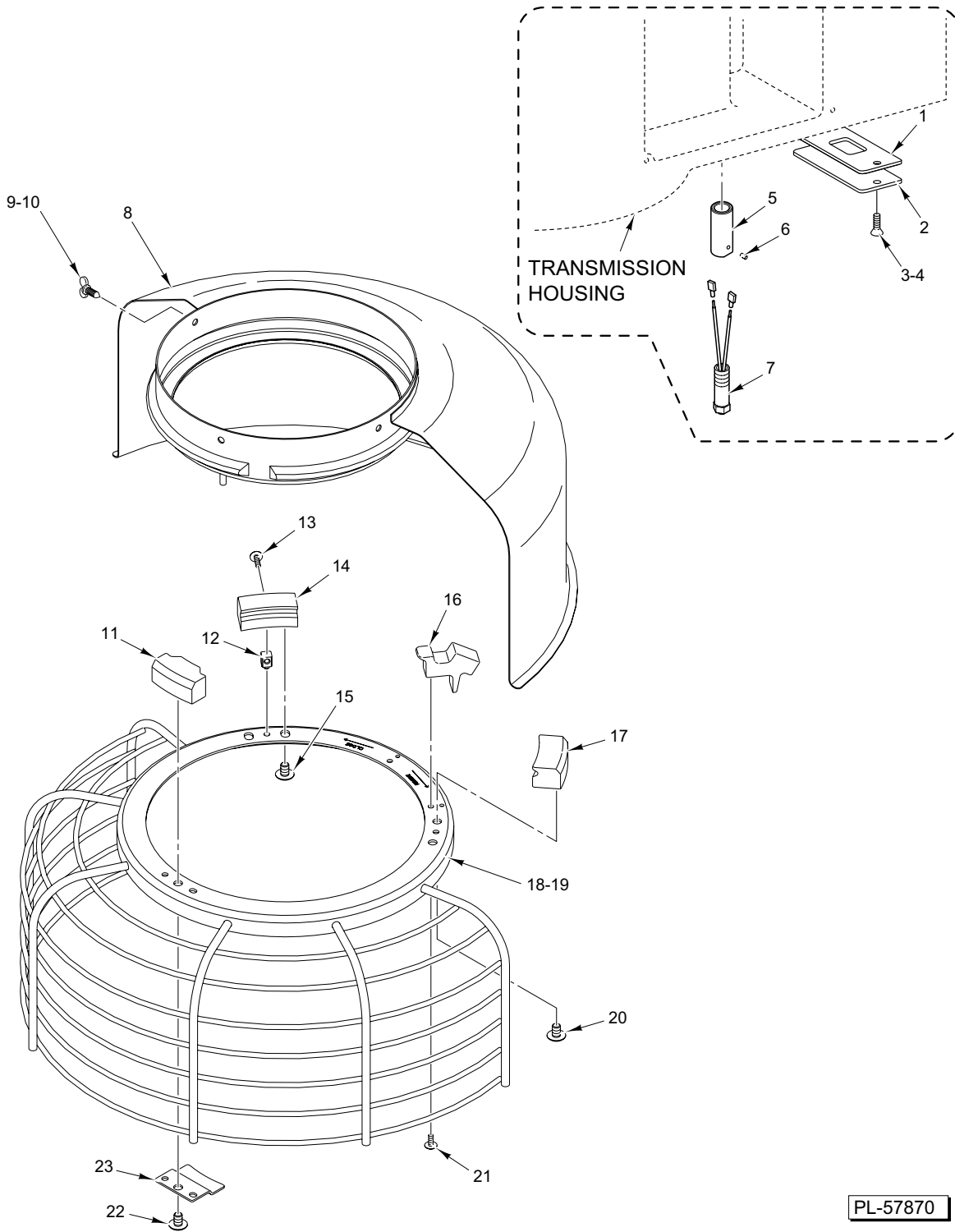


PL-55777

**BOWL GUARD UNIT
(PREVIOUS CONSTRUCTION)**

**BOWL GUARD UNIT
(PREVIOUS CONSTRUCTION)**

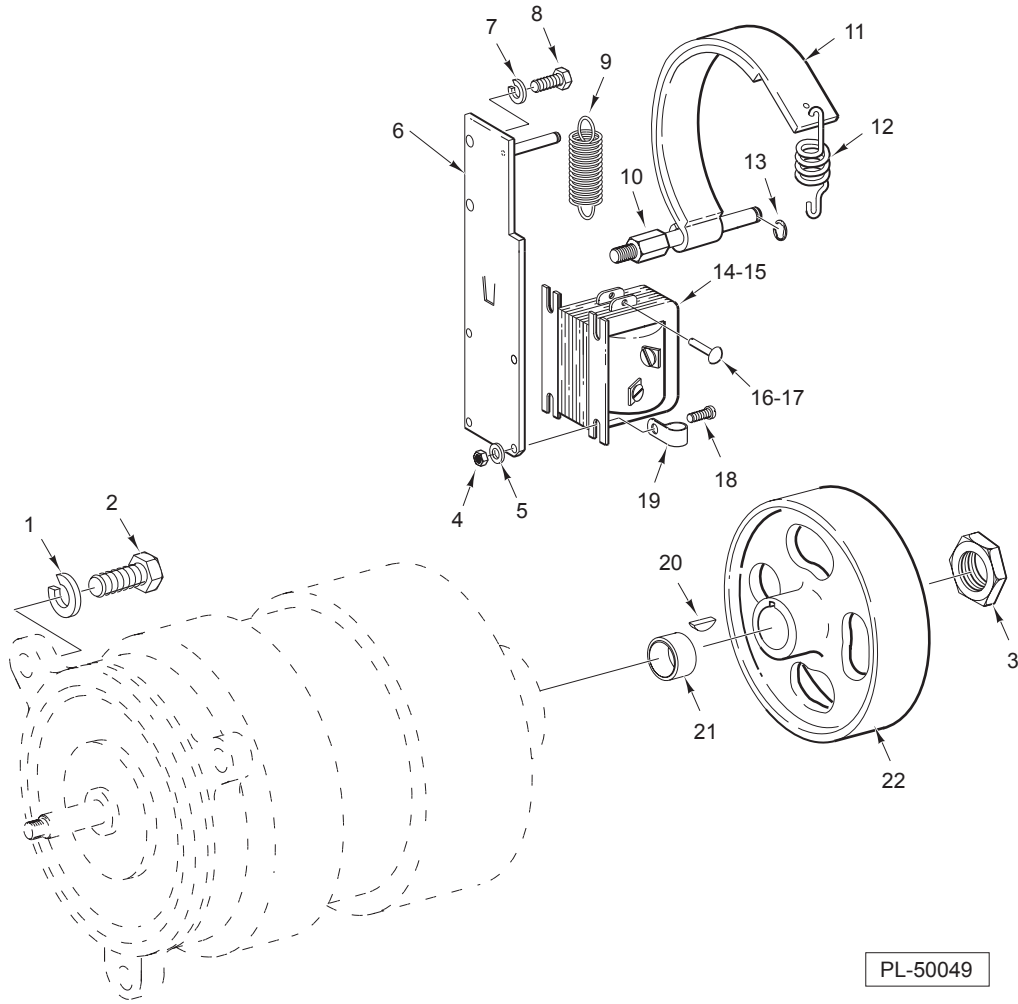
ILLUS.	PART NO.	NAME OF PART	AMT.
PL-55777			
1	00-070641-00011	Thumb Screw 8-32 Special	3
2	SC-121-91	Mach. Screw 8-32 x 1/4 Hex Button Hd., (SST) (ML-134188 & ML-134118)	3
3	00-479007	Latch – Catch Detent (Incls. Items 7, 8, & 9)	1
4	00-478602	Screw – Shoulder (ML-104483, ML-104484, & ML-134185) (See TSB 1039)	1
5	NS-011-07	Mach. Nut 6-32 (SST) Hex (ML-134118 & ML-134188) (Not Shown)	1
6	NS-031-50	Nut – Stop Special 6-32 (SST) (See TSB 1039)	1
7	00-437446-00001	Spring – Cage Detent	1
8	00-437724	Plunger – Detent	1
9	00-437725	Bushing – Detent	1
10	00-874981	Splash Guard & Drip Cup Assy. (Painted)	1
11	00-437713	Shoe – Fixed	1
12	SC-122-52	Mach. Screw 1/4-20 x 3/8 Hex Button Hd. (SST) (ML-134118 & ML-134188)	2
13	00-512987	Loctite 222 Size 31 (50 cc) (ML-134118 & ML-134188)	1
14	SC-122-45	Mach. Screw 1/4-20 x 3/8 Slotted Truss Hd. (SST) (ML-104483, ML-104484, & ML-134185) ...	2
15	00-874956-00001	Wire Cage (ML-104483 & ML-104484)	1
16	00-874956-00002	Wire Cage (ML-134118)	1
17	SC-122-46	Mach. Screw 1/4-20 x 3/4 Slotted Truss Hd. (SST) (ML-104483, ML-104484, & ML-134185) ...	2
18	SC-122-68	Mach. Screw 1/4-20 x 3/4 Hex Button Hd. (SST) (ML-134118 & ML-134188)	2
19	00-512987	Loctite 222 Size 31 (50 cc) (ML-134118 & ML-134188)	1
20	00-437817	Stop – Cage	1
21	00-437436	Pin – Plunger	1
22	00-437447	Housing – Plunger Assy.	1
23	00-437446-00002	Spring – Cage On/Off	1
24	00-437432	Plunger	1
25	00-437718-00002	Saddle – Shoe	1
26	00-437715	Shoe – Saddle	1
27	00-437720	Key – Shoe	1
28	SC-122-45	Mach. Screw 1/4-20 x 3/8 Slotted Truss Hd. (SST) (ML-104483, ML-104484, & ML-134185) ...	2
29	SC-122-52	Mach. Screw 1/4-20 x 3/8 Hex Button Hd. (SST) (ML-134118 & ML-134188)	2
30	00-512987	Loctite 222 Size 31 (50 cc) (ML-134118 & ML-134188)	1
31	00-437714	Shoe – Adjustable	1
32	SC-123-07	Mach. Screw Special 8-32 x 1/2 Slotted Truss Hd. (SST) (ML-104483, ML-104484, & ML-134185)	1
33	SC-122-76	Mach. Screw Special 8-32 x 1/2 Hex Button Hd. (SST) (ML-134118 & ML-134188)	1
34	00-512987	Loctite 222 Size 31 (50 cc) (ML-134118 & ML-134188)	1
35	00-437805	Retainer – Magnet	1
36	SC-122-44	Mach. Screw 8-32 x 3/8 Slotted Truss Hd. (SST) (ML-104483, ML-104484, & ML-134185)	1
37	SC-121-92	Mach. Screw 8-32 x 3/8 Hex Button Hd. (SST) (ML-134118 & ML-134188)	1
38	00-512987	Loctite 222 Size 31 (50 cc) (ML-134118 & ML-134188)	1
	00-439096	Ingredient Chute	1



**BOWL GUARD UNIT
(CURRENT CONSTRUCTION)**

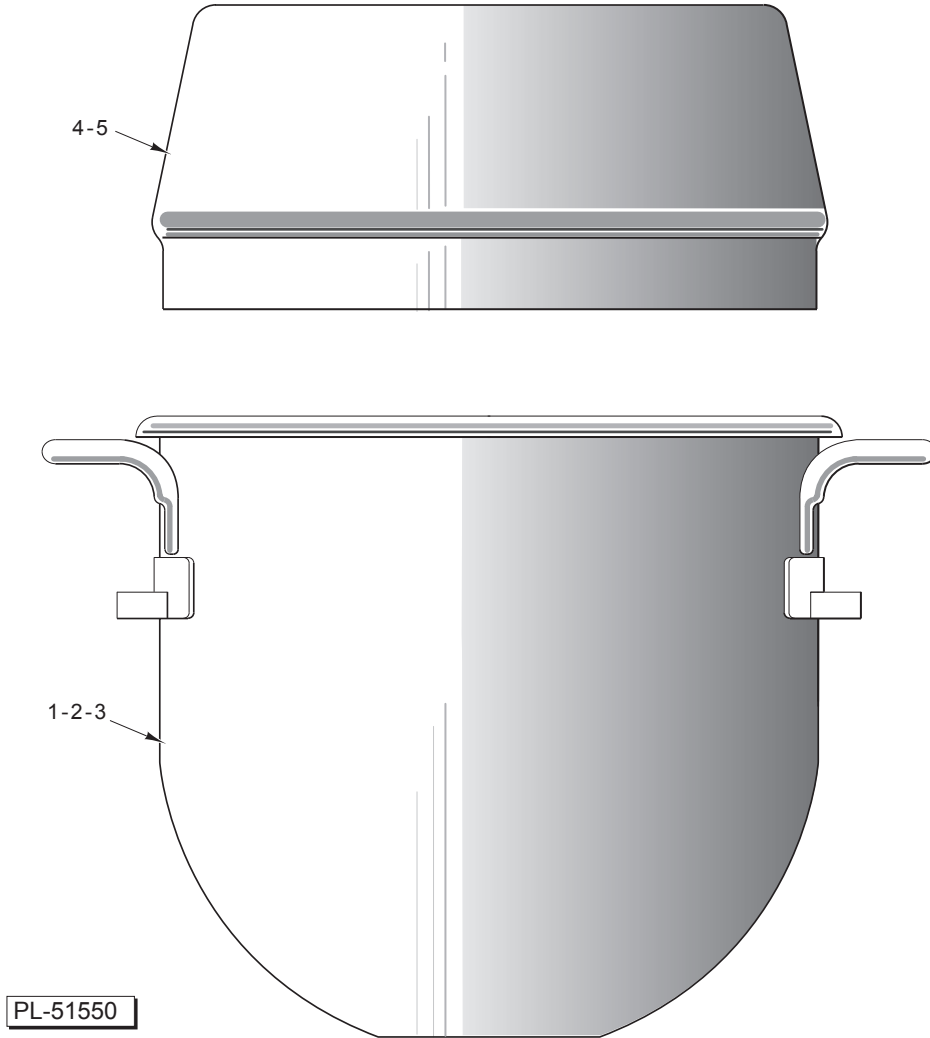
**BOWL GUARD UNIT
(CURRENT CONSTRUCTION)**

ILLUS. PL-57870	PART NO.	NAME OF PART	AMT.
1	00-437809	Gasket – Reed Housing	1
2	00-874974	Plate – Transmission Cover	1
3	SC-022-22	Mach. Screw 10-24 x 3/4 Slotted Pan Hd. (SST)	2
4	SC-122-77	Mach. Screw 10-24 x 3/4 Tx. Flat Hd. (SST)	2
5	00-874990	Extension – Bowl Guard Switch	1
6	SC-075-14	Set Screw 6-32 x 1/8 Hex Hdls., Cup Pt.	1
7	00-874958-00001	Reed – Switch & Plug	1
8	00-874981	Guard – Splash.....	1
9	00-070641-00011	Thumb Screw 8-32 Special (ML-134254)	3
10	SC-128-73	Mach. Screw 8-23 x 1/4 Tx. Button Hd. (SST) (ML-134257)	3
11	00-874983	Shoe – Front	1
12	00-437720	Key – Shoe	1
13	SC-123-07	Mach. Screw 8-23 x 1/2 Slotted Truss Hd.	1
14	00-437714	Shoe – Adjustable	1
15	SC-122-45	Mach. Screw 1/4-20 x 3/8 Slotted Truss Hd.	2
16	00-437805	Retainer – Magnet (Incls. Magnet)	1
17	00-437713	Shoe – Fixed	1
18	00-874978-00001	Wire Cage (ML-134254)	1
19	00-874978-00002	Wire Cage (ML-134257)	1
20	SC-122-45	Mach. Screw 1/4-20 x 3/8 Slotted Truss Hd.	2
21	SC-122-44	Mach. Screw 8-23 x 3/8 Slotted Truss Hd.	1
22	SC-122-45	Mach. Screw 1/4-20 x 3/8 Slotted Truss Hd.	1
23	00-874980	Stop – Cage	1
	00-874977-00001	Wire Cage Assy. (Incls. Items 8, 9, 11 thru 18, & 20 thru 23) (ML-134254)	1
	00-874977-00002	Wire Cage Assy. (Incls. Items 8, 10 thru 17, & 19 thru 23) (ML-134257)	1



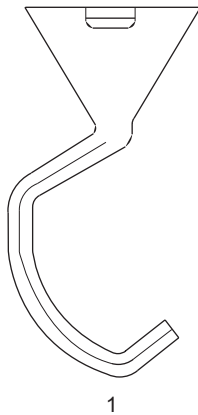
BRAKE UNIT

ILLUS.	PART NO.	NAME OF PART	AMT.
1	WL-004-06	Lockwasher $\frac{3}{8}$ Medium	3
2	SC-116-83	Cap Screw $\frac{3}{8}$ -16 x $1\frac{1}{2}$ Hex Hd.	3
3	00-006566	Lock Nut	2
4	NS-037-06	Lock Nut 8-32 Nylok	4
5	WS-019-10	Washer	4
6	00-435250	Plate – Solenoid	1
7	WL-006-16	Lockwasher $\frac{1}{4}$ Light	2
8	SC-110-12	Cap Screw $\frac{1}{4}$ -20 x $\frac{5}{8}$ Hex Hd.	2
9	00-271292	Spring – Brake	1
10	00-435247	Pivot – Brake Band	1
11	00-024776	Brake Band Assy.	1
12	00-024775	Spring – Motor Brake	1
13	RR-006-22	Retaining Ring	1
14	00-023926-00007	Solenoid – Brake (120 V.)	1
15	00-023926-00001	Solenoid – Brake (208/240 V.)	1
16	00-063201	Pin – Solenoid Clevis	1
17	PC-003-23	Cotter Pin $\frac{1}{16}$ x $\frac{1}{2}$	1
18	SC-009-61	Mach. Screw 8-32 x $\frac{1}{2}$ Slotted Rd. Hd.	4
19	00-024167-00001	Clamp – Lead Support	1
20	KW-003-05	Key – Woodruff #405	1
21	00-435251	Bushing – Brake Drum	1
22	00-060777	Brake Drum	1

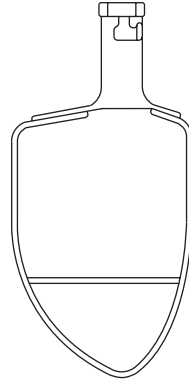


BOWL

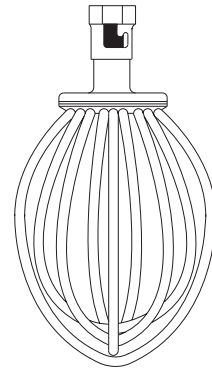
ILLUS.	PART NO.	NAME OF PART	AMT.
1	00-437410	Bowl – 30 Qt. (SST)	1
2	00-295647	Bowl – 20 Qt. (SST)	1
3	00-315245	Bowl – 40 Qt. (SST)	1
4	00-438080	Splash Cover Assy. – 30 Qt.	1
5	00-438079	Splash Cover Assy. – 20 Qt.	1



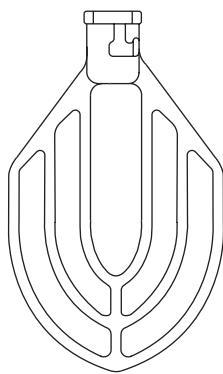
1



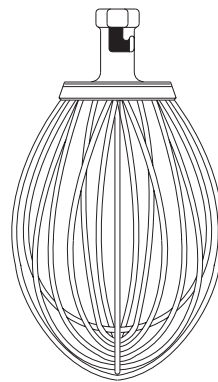
2



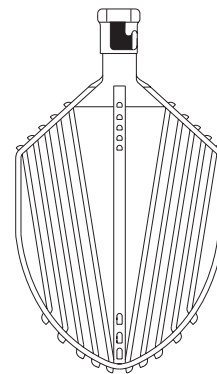
3



4-5



6



7

PL-55806

AGITATORS

ILLUS.	PART NO. 30/40 Qt.	PART NO. 20 Qt.	NAME OF PART	AMT.
1	00-295120	00-275465	"E" Dough Arm (Packaged)	1
2	00-295037	-	"P" Pastry Knife (Packaged)	1
3	00-295163	-	"I" Wire Whip (Deluxe) (Packaged)	1
4	00-275450	00-275461	"B" Flat Beater (Standard) (Packaged)	1
5	00-275451	00-275462	"B" Flat Beater (Deluxe) (Packaged)	1
6	00-275899	00-295029	"D" Wire Whip (Deluxe) (Packaged)	1
7	00-295161	-	"C" Wing Whip (Packaged)	1
	00-315556	-	"ED" Dough Arm – Spiral (Not Shown) (Deluxe) (Packaged)	1
	00-478596	-	"ED" Dough Arm – Spiral (Not Shown) (Standard) (Packaged)	1

Online Parts Catalog

Note: It is helpful, but not essential to know the ML (Material List) Number of the equipment for which a part is needed

How Do I Find An ML Number?

The ML Number is found on the machine dataplate. The dataplate resembles the sample below, and is generally located on the back or side of a machine.

HOBART CORPORATION		MODEL	ML
COMMERCIAL DISHWASHER TROY, OHIO			
LISTED 756A C	UL	US	NSF
VOLTS		DATE CODE:	
HZ	PH	AMP	
749901 MADE IN U.S.A.			

Section 1 – If Equipment ML Number is known
Section 2 – If Equipment ML Number is not known



PRODUCT DIRECTORY | [Locate an Office](#) | [Warranty Registration](#) | [Career Opportunities](#)

SERVICE | PARTS | INSTALLATIONS | WATER TREATMENT | MANUALS & SUPPORT | CONTRACTS & PMs



Hobart Service

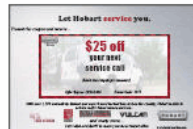
We're there for you, anytime you need us. 24x7.



We're within 50 miles of 95% of our service customers. Only Hobart can provide such blanket coverage because we're the premier equipment manufacturer with nearly 200 offices and 1,700

Hobart Service News & Offers

Get \$25 Off Your Next Service Call!



From hobartservice.com
select
PARTS



PRODUCT DIRECTORY | [Locate an Office](#) | [Warranty Registration](#) | [Career Opportunities](#)

SERVICE | PARTS | INSTALLATIONS | WATER TREATMENT | MANUALS & SUPPORT | CONTRACTS & PMs



[Hobart Service Home](#) > [Hobart National Parts and Accessories Program](#)

National Parts and Accessories Program

Hobart SmartParts® System

The [Hobart SmartParts® System](#) is an interactive parts catalog system. By entering information from your equipment's data plate, you can be assured that you are accessing the



Not Sure How to Use SmartParts™?

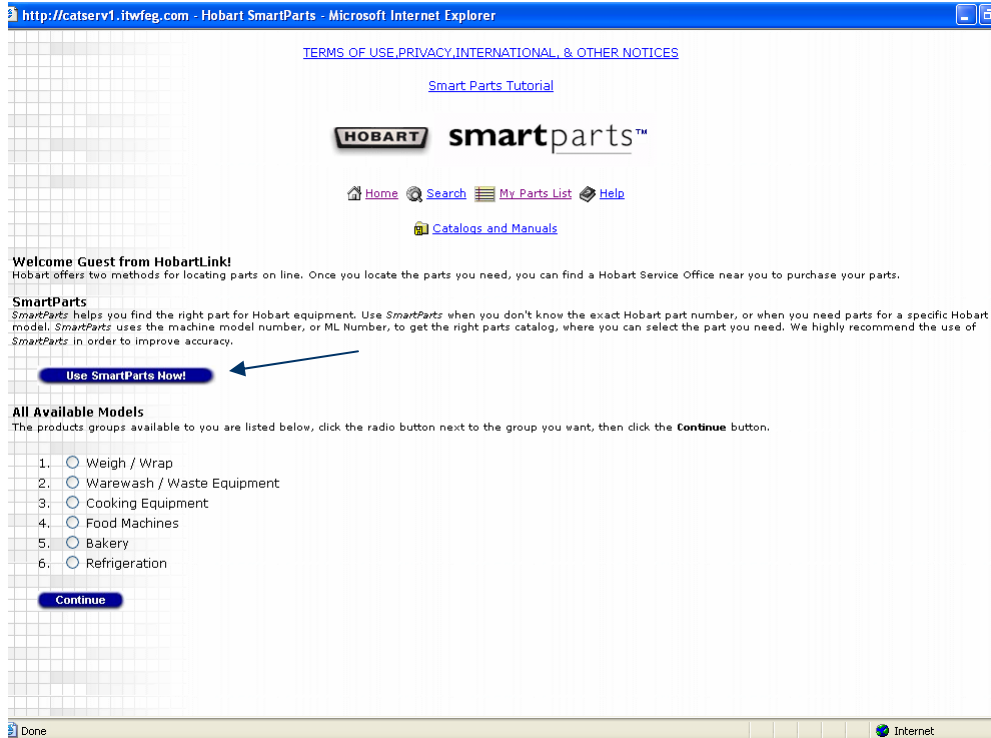
It's easy! Just go through the [Hobart SmartParts™ Online Tutorial](#) and you'll be a parts pro in no time!

Hobart Parts QuickLinks

- ▶ [Hobart SmartParts® System](#)
- ▶ [Parts Catalogs](#)

Next
select
SMARTPARTS

Web Browser Pop-up blocker must be turned off for this site in order for SmartParts to operate



This is SmartParts home page

If the ML Number of the Equipment is known, select Use SmartParts Now

(We'll explain what to do if the ML number of the Equipment is not known in Section 2)

SmartParts

Enter Your ML Number

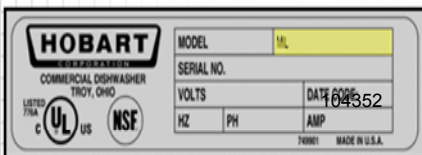
Enter your full or partial ML Number in the field provided, then click the **Search SmartParts!** button.

ML- **Search Smart Parts**

Enter the ML number and click on Search SmartParts

How Do I Find An ML Number?

The ML Number is found on the machine dataplate. The dataplate resembles the sample below, and is generally located on the back or side of a machine.



For this example, the part needed is a Water Pressure Gauge used on the LX 30 Undercounter Dishwasher

The ML number of this dishwasher is 104352

Hobart Parts Web

SmartParts

SmartParts results for **104352** (listed by product group):

Warewash / Waste Equipment

1. LX Series Dishwashers (Includes ML numbers 104349, 104350, 104351, 104352, 130016, 130017, 130018, 130019)

Continue

Go Back

Click on the Radio button to select the Parts Catalog

Then click on Continue

Assemblies Available

LX Series Dishwashers (Includes ML numbers 104349, 104350, 104351, 104352, 104353, 104354, 104355, 104356, 110380, 110381, 130016, 130017, 130018, 130019)

Click the radio button next to the assembly you want, then click the **Continue** button.

Continue

Go Back

1. BASE ASSEMBLY
2. TANK ASSEMBLY
3. DOOR ASSEMBLY
4. ELECTRICAL CONTROL DRAWER (LX SERIES)
5. ELECTRICAL CONTROL DRAWER (LXi SERIES)
6. DISPLAY
7. WASH ARM ASSEMBLY (LX18 SERIES)
8. WASH ARM ASSEMBLY (LX30/40, LXG, LXi, & LXiG SERIES)
9. WASH PIPE ASSEMBLY
10. 50 HZ., 60 HZ. PUMP AND MOTOR ASSEMBLY (INGERSOLL OR CRANE)

The Water Pressure Gauge is on the Base Assembly

Select Base Assembly

Then click on Continue

Parts List

BASE ASSEMBLY

Select an appropriate figure size

Change To:

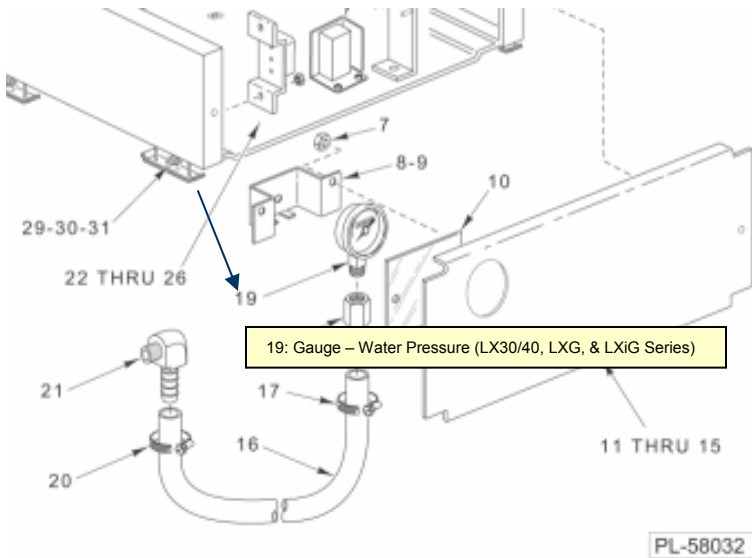
Different Assembly

Different Product

To add an item to your parts list, click the **Add** button next to the item. To see an exploded view, click on the view figure buttons.

View Figure: @ 25% @ 50% @ 75% @ 100% ←

Add	Item	Part No.	Part Description	Qty Used On Assembly
Add	1	00-328634	Track Assy. (RH)	1
Add	2	NS-015-01	Nut 1/4-20 Hex (SST)	8
Add	3	WL-006-17	Lockwasher 1/4 Medium	8



BASE ASSEMBLY

Locate the part needed (Water Pressure Gauge) on the drawing

Placing the cursor on the number will display the Description of the Part

Click on the number pointing to the part

Add	15	00-329267	Retainer - Screw #10	AR
Add	16	00-475060	Hose 1/4 x 12 Pressure Gauge to Fill Valve	1
Add	17	00-528501	Clamp - Hose #4	1
Add	18	FP-088-30	Fitting - Hose Barb (LX30/40, LXG, & LXi Series)	1
Add	19	00-918429	Gauge - Water Pressure (LX30/40, LXG, LXi, & LXiG Series)	1
Add	20	00-528501	Clamp - Hose #4	1
Add	21	FP-088-29	Fitting - Hose 1/4 Barb x 1/8-27 NPTM	1
Add	22	SC-018-24	Mach. Screw 6-32 x 3/4 Phil. Pan Hd.	2
Add	23	00-918385	Block - Terminal (5 Pole) (Current Construction)	1
Add	24	00-918339	Bracket - Terminal Block (Current Construction)	1
Add	25	NS-031-50	Stop Nut 6-32 Hex (SST)	2
Add	26	NS-031-16	Stop Nut 10-24 Hex Elastic (SST)	2
Add	27	00-475299-00001	Connector Assy. (Previous Construction)	1
Add	28	00-473138	Bracket - Terminal Block (Previous Construction)	1
Add	29	00-241857	Foot - Leveling	4
Add	30	00-329284	Spacer - Leveling Foot (LX18 Series)	4

- *Selecting the part on the figure causes the part to be highlighted on the parts list*
- *Click on the Add button to add the part to the shopping cart*
- *You can add more parts or change the quantity of the parts already in the cart*
- *When finished, click on the Confirm Parts Selected and then on Print Parts List if you want to print*

Parts Selected

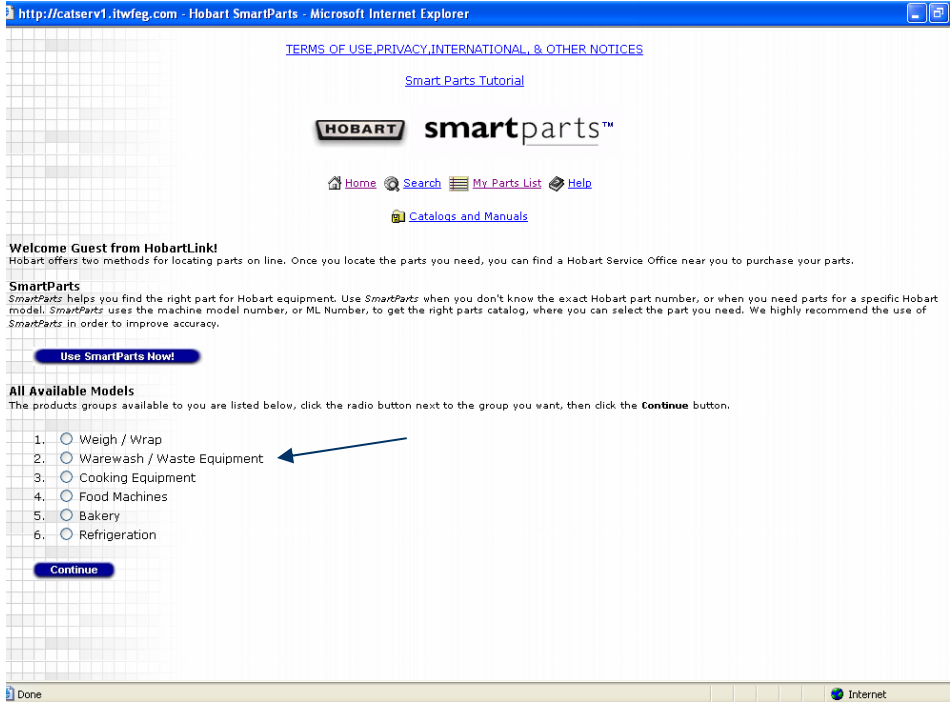
Items Listed for Guest

Add More Items From:

There is 1 item in your parts list:

Delete	Qty. Req.	Part No.	Part Description	Parts List
<input type="button" value="Delete"/>	<input type="text" value="1"/>	00-918429	Gauge - Water Pressure (LX30/40, LXG, LXi, & LXiG Series)	BASE ASSEMBLY

Use SMARTPARTS Now



This (again) is SmartParts home page

For this example, the part needed is a Water Pressure Gauge used on the LX 30 Undercounter Dishwasher

If the ML Number of the Equipment is not known, click on the Radio button to select Warewash / Waste Equipment

Then click on Continue

(Go to Section 1 if you do know the ML number of the Equipment)

Section 2 – If Equipment ML Number is not known

Products Available

Warewash / Waste Equipment

Click the radio button next to the product you want, then click the **Continue** button.

Continue **Go Back**

- 1. Door Type Dishwasher
- 2. Booster
- 3. Conveyor Type Dishwasher (C-LINE)
- 4. Flight Type Dishwasher
- 5. Miscellaneous Warewash
- 6. UnderCounter Dishwasher (indicated by a blue arrow)
- 7. Waste Equipment

Continue **Go Back**

Click on the Radio button to select UnderCounter Dishwasher

Then click on Continue

Parts Catalogs

UnderCounter Dishwasher

Click the radio button next to the catalog you want, then click the **Continue** button.

Continue **Go Back**

- LX Series Dishwashers (Includes ML numbers 104349, 104350, 104351, 104352, 104353, 104354, 104355, 104356, 110380, 110381, 130016, 130017, 130018, 130019)
- WM Series Dishwashers
- Dishwasher Motor Book (Includes the following Motor Spec /ML numbers - 9257, 6661, 8115, 17829, 18897, 18751, 18931, 18930, 18932, 31219, 31220, 31221, 18491, 17350, 9801, 18603)
- SR24 Series Dishwasher (SR24C - ML-130021, SR24H - ML-130022)
- Fast Food Warewashers

Continue **Go Back**

Click on the Radio button to select LX Series Dishwashers

Then click on Continue

Assemblies Available

LX Series Dishwashers (Includes ML numbers 104349, 104350, 104351, 104352, 104353, 104354, 104355, 104356, 110380, 110381, 130016, 130017, 130018, 130019)

Click the radio button next to the assembly you want, then click the **Continue** button.

Continue **Go Back**

- BASE ASSEMBLY
- TANK ASSEMBLY
- DOOR ASSEMBLY
- ELECTRICAL COMPONENTS(LX SERIES)
- ELECTRICAL COMPONENTS (LXi SERIES)
- DISPLAY
- WASH AND RINSE ARM ASSEMBLY(lx30/40, lxx, lxi, & lxiig SERIES)(PREV. CONSTR.)
- WASH AND RINSE ARM ASSEMBLY(lx30/40, lxx, lxi, & lxiig SERIES)(CURRENT CONSTR.)
- WASH ARM ASSEMBLY(LX18 SERIES)
- WASH PIPE ASSEMBLY (PREVIOUS CONSTRUCTION)
- WASH PIPE ASSEMBLY (CURRENT CONSTRUCTION)

The Water Pressure Gauge is on the Base Assembly

Select Base Assembly

Then click on Continue

Parts List

BASE ASSEMBLY

Select an appropriate figure size

Change To:

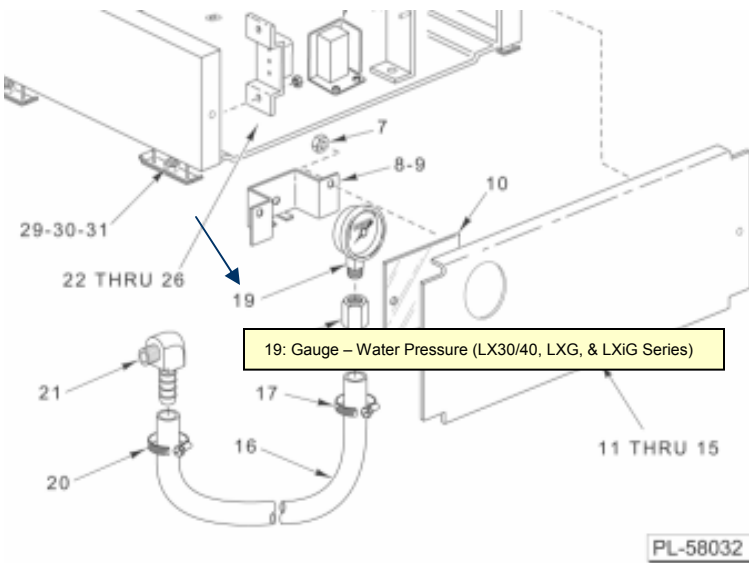
Different Assembly

Different Product

To add an item to your parts list, click the **Add** button next to the item. To see an exploded view, click on the view figure buttons.

View Figure: @ 25% @ 50% @ 75% @ 100% ←

Add	Item	Part No.	Part Description	Qty Used On Assembly
Add	1	00-328634	Track Assy. (RH)	1
Add	2	NS-015-01	Nut 1/4-20 Hex (SST)	8
Add	3	WL-006-17	Lockwasher 1/4 Medium	8



Locate the part needed (Water Pressure Gauge) on the drawing

Placing the cursor on the number will display the Description of the Part

Click on the number pointing to the part

BASE ASSEMBLY

Add	15	00-329267	Retainer - Screw #10	AR
Add	16	00-475060	Hose 1/4 x 12 Pressure Gauge to Fill Valve	1
Add	17	00-528501	Clamp - Hose #4	1
Add	18	FP-088-30	Fitting - Hose Barb (LX30/40, LXG, & LXI Series)	1
Add	19	00-918429	Gauge - Water Pressure (LX30/40, LXG, LXI, & LXIG Series)	1
Add	20	00-528501	Clamp - Hose #4	1
Add	21	FP-088-29	Fitting - Hose 1/4 Barb x 1/8-27 NPTM	1
Add	22	SC-018-24	Mach. Screw 6-32 x 3/4 Phil. Pan Hd.	2
Add	23	00-918385	Block - Terminal (5 Pole) (Current Construction)	1
Add	24	00-918339	Bracket - Terminal Block (Current Construction)	1
Add	25	NS-031-50	Stop Nut 6-32 Hex (SST)	2
Add	26	NS-031-16	Stop Nut 10-24 Hex Elastic (SST)	2
Add	27	00-475299-00001	Connector Assy. (Previous Construction)	1
Add	28	00-473138	Bracket - Terminal Block (Previous Construction)	1
Add	29	00-241857	Foot - Leveling	4
Add	30	00-329284	Spacer - Leveling Foot (LX18 Series)	4

- *Selecting the part on the figure causes the part to be highlighted on the parts list*
- *Click on the Add button to add the part to the shopping cart*
- *You can add more parts or change the quantity of the parts already in the cart*
- *When finished, click on the Confirm Parts Selected and then on Print Parts List if you want to print*

Parts Selected

Items Listed for Guest

Add More Items From:

Current Assembly

Different Assembly

Different Product

There is 1 item in your parts list:

Delete	Qty. Req.	Part No.	Part Description	Parts List
Delete	<input type="text" value="1"/>	00-918429	Gauge - Water Pressure (LX30/40, LXG, LXI, & LXIG Series)	BASE ASSEMBLY

Update Quantities

Confirm Parts Selected

Use **SMARTPARTS** Now



RECOMMENDED SPARE PARTS LIST

D340 MIXER (ML-134254) (280/30/3)

Qty	Part Number	Description
1	87711-304-1	Bowl Guard Switch
1	87711-183-2	Stop Switch
1	87711-183-4	Start Switch
1	87711-306-4	Bowl Height Sensing Switch
1	294650-4-2	Timer Assy (200/230V)
1	87713-80-1	Contactora (208/240V 3 Pole)
1	70487-6	Capacitor
1	88196-5-1	Overload Relay
1	438614-1-2	Bowl Lock Solenoid (240V)
1	437805	Magnet Retainer
1	BB-21-34	Bearing - Top Agitator Shaft Bearing
1	BB-21-35	Bearing - Bottom Agitator Shaft Bearing
1	439286	Seal - Agitator Shaft Seal
1	271315	Interlock Switch
1	875334-1	Motor (208/60/3)
1	24198	Bowl Lift Nut